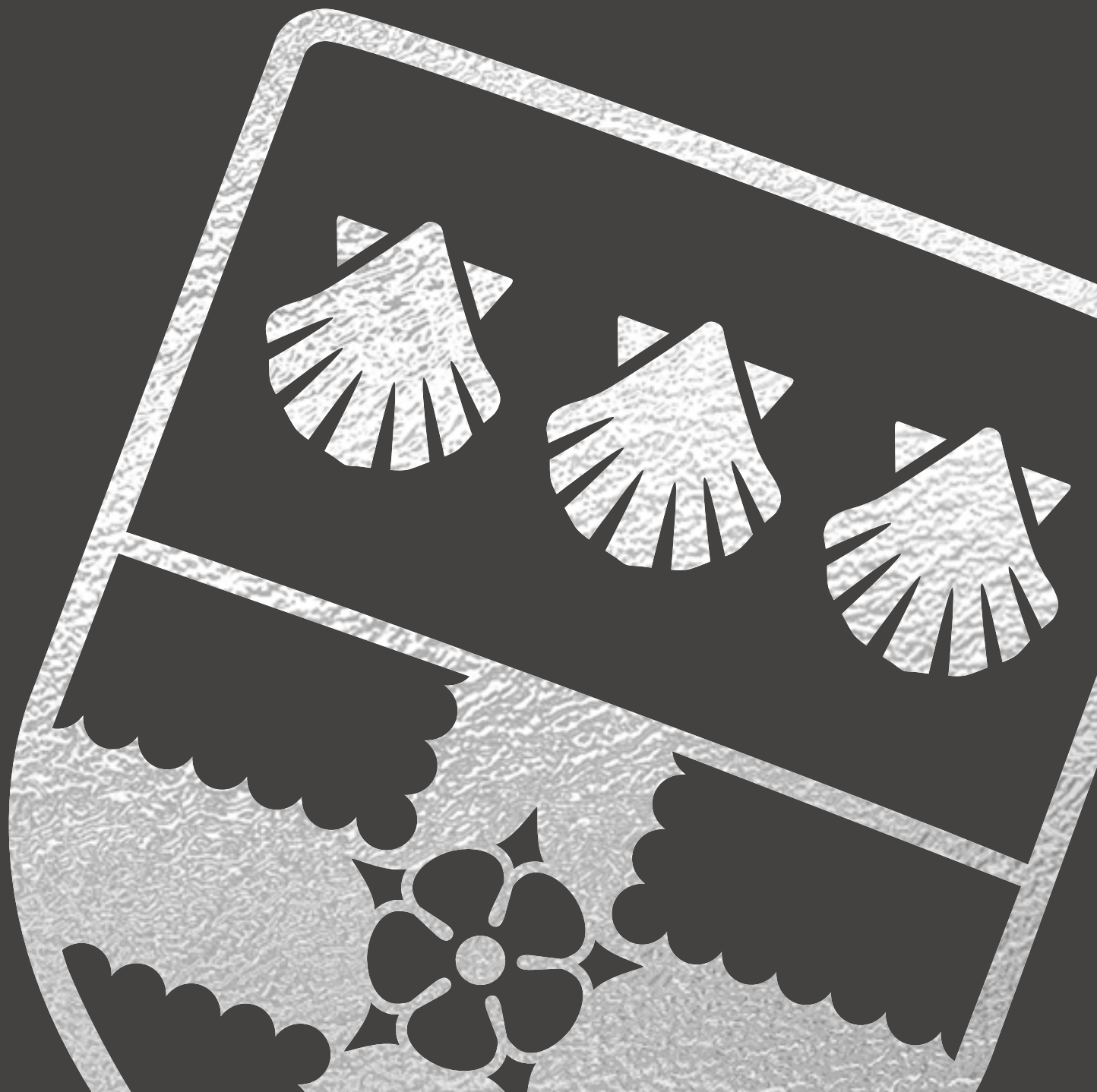


**UNIVERSITY OF READING
DOCTORAL GUIDE
2021**





Since our earliest origins, our university community has embraced and supported progress.

As the world emerged from the Second World War, one of our first Vice-Chancellors, Sir Frank Stenton (1946–1950), called the University of Reading a living organism that adapts effectively to change. Despite the uncertainty of the time, he spoke with excitement about Reading's uncharted future:

“Great changes lie ahead ... but also brilliant opportunities.”

This sentiment echoes loudly now as the world confronts urgent issues in health, the environment, and social justice.

Here at Reading, we are focused on finding solutions and taking action. For example, we are recognised for our world-leading research in climate change¹ and have worked tirelessly to support research and health services during the global coronavirus pandemic².

We are proud of the collaborative and inclusive community that we've built together at Reading, and we invite you to join it for your doctoral degree. Our programmes cover a broad range of disciplines and, through the quality of our research, as well as our excellent student support services, we are preparing our graduates to succeed in a changing world – and to seize the brilliant opportunities that lie ahead.

¹ We are ranked 2nd in the world for research in Meteorology and Atmospheric Sciences, according to the latest Center for World University Rankings by Subject, 2017. 100% of our research impact in Earth Systems and Environmental Sciences has been classed as world leading or internationally excellent in the latest Research Excellence Framework (REF) 2014.

² See our website at rdg.ac.uk/UoRCOVID.

W
E
L
C
O
M
E

CONTENTS

About us 6	Real-world impact 22	Support services 34	Visit us 82
Exploring town 8	Doctoral community 23	International and EU students 36	Local area 83
What's on 10	Graduate School 24	Funding 40	Useful information 84
Our campuses 12	Doctoral Research Conference 26	Fees 42	Index 85
Your doctorate 16	Skills and training 28	Research areas 44	Important information 86
Our research 18	Accommodation 30	Applying for a PhD 80	
Facilities 20			

RESEARCH AREAS

A Accounting see Business Informatics, Systems and Accounting 52	B Biological Sciences 48	C Chemistry 53
Agriculture, Policy and Development 45	Biomedical Engineering 49	Classics 54
Ancient History see Classics 54	Biomedical Sciences 50	Climate see Meteorology 72
Archaeology 46	Built Environment 51	Computer Science 55
Architecture see Built Environment 51	Business Informatics, Systems and Accounting 52	Construction Management see Built Environment 51
Art 47		Consumer Behaviour and Food Marketing see Agriculture, Policy and Development 45
		Cybernetics 56

E Early Modern Studies 57	H History 67
Ecology see Biological Sciences 48	I International Development see Agriculture, Policy and Development 45
Economics 58	International Relations 76
Education 59	Italian Studies see Modern Languages 73
Electronic Engineering 60	
Energy and Environmental Engineering see Built Environment 51	
English Language and Applied Linguistics 61	L Language Sciences see Psychology and Clinical Language Sciences 77
English Literature 62	Law 68
Environmental Science 66	

F Film, Theatre & Television 63	M Management 69
Finance 64	Marketing see Agriculture, Policy and Development, and Management 45/69
Food and Nutritional Sciences 65	Mathematics and Statistics 70
French Studies see Modern Languages 73	Medieval Studies 71
	Meteorology 72
G Geography and Environmental Science 66	Microbiology see Biological Sciences 48
German Studies see Modern Languages 73	Modern Languages 73
Graphic Communication 79	

N Neuroscience see Psychology and Clinical Language Sciences 77	P Pharmacy 74
Nutrition see Food and Nutritional Sciences 65	Philosophy 75
	Politics and International Relations 76
	Psychology and Clinical Language Sciences 77
	R Real Estate and Planning 78
	S Spanish and Latin American Studies see Modern Languages 73
	Speech and Language Therapy see Psychology and Clinical Language Sciences 77
	T Teaching see Education 59
	Television 63
	Theatre 63
	Typography & Graphic Communication 79

The University of Reading has plenty to offer: a rich history, a vibrant academic community, a beautiful campus in a thriving town, and much more.

REAL-WORLD IMPACT

Join a university ranked in the top 20 in the UK¹ for research intensity, where doctoral researchers can make a real impact. We host, or participate in, a large number of prestigious doctoral training partnerships and research centres sponsored by UK research councils and other major funders.

DIVERSE COMMUNITY

Pursue doctoral study with us at any stage in your life and career – we welcome students from a variety of educational, professional and personal backgrounds. This makes our doctoral community an ideal environment for you to exchange ideas, form innovative collaborations, and gain new perspectives. We currently have 1,870 PhD students from 108 countries.² The Graduate School, as the hub for all doctoral research activity, plays a major part in connecting this diverse and international community.



EXPERT SUPERVISION AND FACILITIES

Our thriving community of doctoral researchers is making exciting new discoveries with global reach and impact, with the help and guidance of academics working at the cutting edge of their fields. Our £500m investment has created outstanding facilities for doctoral students, and we continue to invest in new buildings and amenities.



ABOUT US

WORLD-CLASS RESEARCH

98% of our research is rated of international standing³ and we are among the top 20% of world institutions.⁴ We have been awarded four Queen's Anniversary Prizes, a prestigious accolade recognising the outstanding and groundbreaking research that has taken place in our departments.



BRIGHT PROSPECTS

98.7% of our doctoral researchers who submit a thesis successfully receive their doctorate.⁵ We have a proven track record in supporting doctoral students to successfully complete their studies.



GREEN CREDENTIALS

Our ambition is to be the 'greenest' university in the UK. We are already recognised as a first-class university for environmental and ethical performance in the People & Planet University League, 2019.

100% of our electricity has come from renewable sources since 2009, we have moved our investments away from fossil fuels, and we are committed to becoming carbon neutral by 2030. Our Whiteknights campus has been recognised with a Green Flag Award for nine consecutive years (2011–2019).

GLOBAL PRESENCE

We are involved in a range of large-scale international projects, and our overseas campuses – including the internationally accredited Henley Business School South Africa – are symbols of our international outlook and global ambition. We also have postgraduate partnerships with universities worldwide, in countries such as the Philippines, Russia, Italy, France, Greece, the USA, China and Thailand.



¹ Times Higher Education Research Intensity Ranking, 2014, based on its analysis of REF 2014.

² Higher Education Statistics Agency (HESA) returns (UK-based and offshore students included), 2018/19.

³ Based on our submissions judged to be world leading, internationally excellent and internationally recognised in overall quality by REF 2014.

⁴ The University of Reading is 205th out of 1,002 institutions ranked in the QS World University Rankings 2021. We have been among the top 20% in these global rankings since 2016.

⁵ University of Reading Doctoral Examination Outcomes, averaged over a five-year period, 2014/15 to 2018/19.

Reading has a proud history of welcoming people from across the globe, and has grown into a lively, diverse community. As well as its bustling town centre – boasting a huge variety of restaurants, bars, pubs, parks and shows – find out why thousands of our graduates now call Reading home.



EAT

Excite your taste buds in one of Reading's many cafes and restaurants. With Hyderabad, tapas, Lebanese, Ethiopian and vegan options, you're sure to find somewhere to satisfy your appetite. Be sure to check out the Wednesday and Friday food markets, serving jerk chicken wraps, Peruvian street food, inventive plant-based options and more.



RELAX

With three parks that have won Green Flag Awards, there is no shortage of places to unwind. Take time out in Workhouse Coffee, based within a Georgian coaching inn, step aboard Whittington's Tea Barge on the Thames, or treat yourself to an open-air swim at Thames Lido.



EXPERIENCE

For something more cultural, South Street offers cutting-edge comedy, music and theatre – the venue has hosted acts such as Radiohead and Jimmy Carr. Reading also has a vibrant music scene, with bands including The Amazons and Sundara Karma bursting onto the scene in recent years. Head to the Purple Turtle, Sub89 or Oakford Social Club to discover the next big sound.



PLAY

Head into town for plenty of places to have a fantastic time with friends. From clubs playing indie, pop and retro hits, to a selection of wine bars, pubs and tap rooms.

Try paddle boarding or kayaking down the Thames, or head to Lagoon Park for jet skiing and water obstacle courses. Get your friends together to solve one of Reading's many escape rooms, or enjoy an evening under the stars at a summer open-air cinema screening.

SHOP

Reading is one of the south-east's top shopping destinations, with The Oracle and Broad Street home to many of the UK's top brands. There are plenty of unique, independent businesses too: Elsie's Vintage sells classic clothing from the '70s, '80s and '90s, while Eclectic Games stocks one of the largest board game collections in the country.

The Edwardian Harris Arcade features a variety of independent shops, including Crunch Comics, The Sound Machine record shop, and the hugely popular ale and cheese shop, The Grumpy Goat.

EXPLORING TOWN

Reading might be most famous for its music festival, but the town also hosts dozens of food, drink, arts, theatre and music events throughout the year.

With so much on offer, you'll have plenty of opportunities to find something you connect with, meet people with similar interests, and find your place in a lively scene.

READING FRINGE

Aspiring comedians, playwrights, musicians and artists descend upon Reading for a huge variety of exhibitions, shows, stand-up sets, gigs and performances.



SITELINES

Theatre unlike anything you've seen before. Sitelines brings shows to unusual spaces: think pop-up performances in self-storage units, hair salons, and even a football stadium.



ARE YOU LISTENING?

For one day only, Reading's hottest venues throw open their doors to some of the best unsigned and alternative music acts from across the UK. Catch more than 60 acts across eight venues, with all proceeds going to charity.



CRAFT THEORY

Combining the best beers from local, national and international breweries, hours of music from quality DJs, and delicious gourmet street food.

FEASTIVAL

One of the hottest events of the summer, Feastival is a buzzing market of cuisine from across the world. Don't miss the Thai street food, loaded nachos or halloumi fries.



OPEN FOR ART

An annual celebration of Reading's art, heritage, culture and creativity. Expect to find galleries, impromptu performances, insightful talks and much more.



DOWN AT THE ABBEY

Dance the night away among the ruins of Reading Abbey. This underground music festival transforms a historic site into a hub of music, dancing and entertainment. Try a variety of food stalls and bars as you enjoy the lineup.

WHAT'S ON

WHITEKNIGHTS CAMPUS

Enjoy a beautiful, award-winning environment¹ that caters to the diversity of our students. Set in 130 hectares of stunning parkland, our main campus offers plenty of places to eat, shop and socialise.



READING FILM THEATRE

As Reading's only independent cinema, our 300-seat auditorium shows films from around the world. We're proud of our top-quality digital projector, huge screen, and state-of-the-art Dolby surround sound.



ECO-FRIENDLY MARKETS

Our Eat at the Square and Park Eat venues are home to a sustainable market featuring vegetarian and vegan food, a bring-your-own-container service, environmentally friendly cleaning products, and other ethically sourced products.



STUDENTS' UNION

Whiteknights campus is home to RUSU, Reading University's Students' Union. RUSU supports and funds more than 100 societies, 50 sports clubs, three student media outlets and many volunteering opportunities, so there are plenty of activities for you to get involved in.

DOL.CHE VITA

This modern cafe offers a delicious range of vegan and vegetarian sandwiches, salads, soups, snacks and cakes. It has a fully licensed espresso bar – featuring speciality coffees and cocktails – and a large patio area.



GLOBAL FOODIE THURSDAY MARKET

Whiteknights campus regularly hosts an international street food market. With vegan, vegetarian and gluten-free options, the market caters to all dietary requirements. From the Americas to Asia, you can try different flavours from around the world.



HARRIS GARDEN

This secret garden on our Whiteknights campus includes a flower meadow, apple orchard and cherry bowl, as well as a variety of other gardens and rare flora from around the world. It's also the home of the Harris Garden Bee Project, which has a small apiary of three bee hives set up within the walled garden.



¹ Whiteknights campus has been awarded nine consecutive Green Flag Awards, 2011–2019.

LONDON ROAD CAMPUS



A short walk from our Whiteknights campus and the town centre, our London Road campus is a peaceful setting of traditional cloisters and green spaces.

It's a historic site – one of the University's original campuses – and has two on-site cafes. This includes The Dairy, a place to eat, drink, play pool and watch sporting events.

London Road campus is home to the School of Architecture and the Institute of Education, as well as the Great Hall, the main venue for our graduation ceremonies and other events.



Our beautiful Greenlands campus, on the banks of the river near Henley-on-Thames, dates back to the early nineteenth century.

Greenlands is used by the University's Henley Business School as the base for its Doctor of Business Administration (DBA), Executive Master in Business Administration (EMBA), and corporate learning programmes.



GREENLANDS CAMPUS

YOUR DOCTORATE

Complete your PhD at the University of Reading, where you'll be supported to deliver research that matters.

EXPERT SUPERVISION

You'll be matched with a supervisor who is experienced in your field of research, as well as a second supervisor or a small supervisory team. They'll help you formulate your research and provide you with specialist support throughout your studies.

If you already have a specific supervisor in mind, we'll match you with your preferred supervisor wherever possible. Collaborative supervision between schools is actively encouraged.

"There's a lot of support out there for students, and a healthy work-life balance is encouraged. I worried that, as a mature student, I'd be the odd one out – now I realise there's no such thing as the typical PhD student. People in the postgraduate community come from all over the world and from lots of different backgrounds – this brings a wonderful richness to the mix."

Heike Krüsemann, PhD in Education

FLEXIBLE DOCTORAL DEGREES

We recognise that every PhD student has different needs, so we offer a variety of options to tailor your research degree to your own particular requirements. We're flexible about:

- research topics
- modes of study
- the country you work in, through our PhD by Distance programme
- the duration of your programme – a full-time PhD can be completed in a minimum of three years and a part-time PhD in a minimum of four years.

DEGREE OPTIONS

PhD

These research degrees involve sustained, in-depth study of a particular topic to form a written thesis that is then assessed by oral examination (viva).

When you register for a PhD, you will have a formal review of progress during your second year (or part-time equivalent). At the review, your supervisors will assess the standard of your research to date and decide whether it offers sufficient scope to continue to PhD level. This is called Confirmation of Registration.

PhD BY PUBLISHED WORKS

This programme is aimed at candidates who have a body of publications produced during the course of their career, either within or outside academia.

PRACTICE-BASED PhD

This route is for some arts subjects, where your independent, original PhD research is presented through both practice and a thesis.

PROFESSIONAL DOCTORATES

We offer several professional doctorate degrees that provide professional practice opportunities. These include:

- the Henley Doctor of Business Administration (DBA)
- the Agriculture and Food Doctorate (DAgriFood)
- the Doctorate of Education (EdD).

ENHANCED PROGRAMMES FOR OVERSEAS LECTURERS

Our PhD Plus programme has been designed to meet the specific needs of overseas lecturers who want to study for a PhD while also learning about higher education in the UK and improving their teaching skills. We offer this at no additional cost.

DOUBLE PhD PROGRAMMES

Earn a double PhD degree, supported by Reading and one of our global partners. We currently offer a number of double PhD programmes with universities in the Philippines, Australia, Russia, Italy and France.

See www.reading.ac.uk/graduateschool for more information on the types of programmes available.

ACADEMIC SUPPORT

You'll have access to a range of services to support your studies.

- **Research supervisors.** In addition to your dedicated supervisors, you can also access support from your school or department's director of postgraduate research studies.
- **The Graduate School.** Our team of experienced and helpful support staff deal exclusively with doctoral research matters and administration.
- **Reading Researcher Development Programme (RRDP).** Develop the skills you need to successfully complete your doctorate and improve your personal effectiveness.
- **Academic liaison librarians.** Your academic liaison librarian will advise you on finding the best resources to support your research, in person or by email.
- **Study advisers.** Our team of study advisers is based in the Library and offers one-to-one sessions, workshops and online resources designed for postgraduate students.
- **Maths support.** If your research draws on maths or statistics skills that you might not have used recently, our experienced mathematicians can give you specialist help via their drop-in service, online guides and tutorials, weekly workshops and other events.
- **English language support for international and EU students.** Our free Academic English courses and tutorials will help you to improve your language skills while you study. Visit www.reading.ac.uk/aep.

We also have a **Research Engagement Team**, which can help you:

- decide where to publish your research
- help you achieve open access for your research outputs via the CentAUR institutional repository or our Gold Open Access funds
- advise you on how to track the impact of your research via bibliometrics and altmetrics
- adopt an open research approach.

Support is also available for managing, preserving and sharing your research data and other research materials.

"My supervisor has given me more than just academic expertise; she has helped shape my entire doctoral experience. I now have the confidence to take my research in new and exciting directions."

Melanie Khuddro,
PhD in Modern History



OUR RESEARCH

Become an integral part of our research community as you help uncover trends, shape policies and develop solutions.

We're continually investing in our research community, the latest technology and facilities, and our research centres – and you'll work with people who are making and discussing the latest discoveries.

RESEARCH QUALITY

- 98% of our research overall was rated world leading, internationally excellent or internationally recognised in the latest Research Excellence Framework (REF) 2014.
- We're in the top 20 institutions in the UK by research intensity¹ and top 30 in the UK by research power², recognising both quality and quantity of research.

We're home to several internationally important departments, including our Department of Meteorology, ranked 2nd in the world for research in Meteorology and Atmospheric Sciences³, and the School of Agriculture, Policy and Development, which is ranked 9th in the world and 1st in the UK for Agriculture & Forestry⁴.

¹ Times Higher Education Research Intensity Ranking, 2014, based on its analysis of REF 2014.

² Research Fortnight's Research Power Rankings, 2014, based on its analysis of REF 2014.

³ Latest World University Rankings by Subject, Center for World University Rankings, 2017.

⁴ QS World University Rankings by Subject, 2020.



BREADTH OF RESEARCH

Our four research themes speak to the core areas of research excellence at Reading and all of these areas have exciting opportunities for doctoral study:

- Environment
- Agriculture, Food & Health
- Heritage & Creativity
- Prosperity & Resilience.



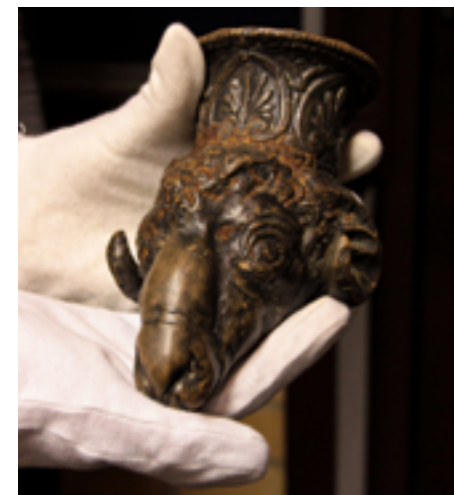
RESEARCH INSTITUTES AND CENTRES

The University of Reading is home to world-class research institutes and centres, covering a broad range of disciplines and complex research challenges.

Find out more at
www.reading.ac.uk/research.

"In their time with us, PhD students gain the knowledge, skills and experience to conduct and present research that stands up to peer review on an international stage. At the University of Reading, we are investigating some of society's most pressing challenges and our doctoral students play a key role in making new discoveries that have lasting impact."

Professor Faustina Hwang,
PhD supervisor,
biomedical engineering



MUSEUMS AND SPECIAL COLLECTIONS

The University is home to three museums as well as numerous collections of archives, rare books and manuscripts.

Find out more at
www.reading.ac.uk/special-collections.

Explore some of the spaces where you can conduct your research.¹

CHEMICAL ANALYSIS FACILITY

Our purpose-built Chemical Analysis Facility (CAF) provides instrumentation in the areas of:

- nuclear magnetic resonance (NMR)
- x-ray diffraction
- mass spectrometry
- thermal analysis
- electron microscopy
- molecular spectroscopy.

The facility supports the chemical aspects of our research in areas such as biology and physical science, archaeology, soil science, engineering, pharmaceuticals, and nutrition.

MRI SCANNER

The University's magnetic resonance imaging (MRI) scanner is located in the Centre for Integrative Neuroscience and Neurodynamics (CINN). Researchers across the University use the scanner to study the structure and function of the brain in living people.

The scanner features:

- whole body imaging with total imaging matrix technology
- a large selection of coils for clinical and research use
- a stimulus presentation PC with visual goggle system and LCD display
- MRI-compatible stimulus response pads and joysticks
- pre- and post-scan behavioural testing cubicles
- a changing and restroom facility.

ICMA CENTRE TRADING FLOOR

Our on-campus International Capital Market Association (ICMA) Centre houses three dealing room facilities with more than 100 trading simulation terminals, supported by both Refinitiv and Bloomberg databases.

REFURBISHED LIBRARY

Our Library has undergone a major £40m refurbishment. Improvements include:

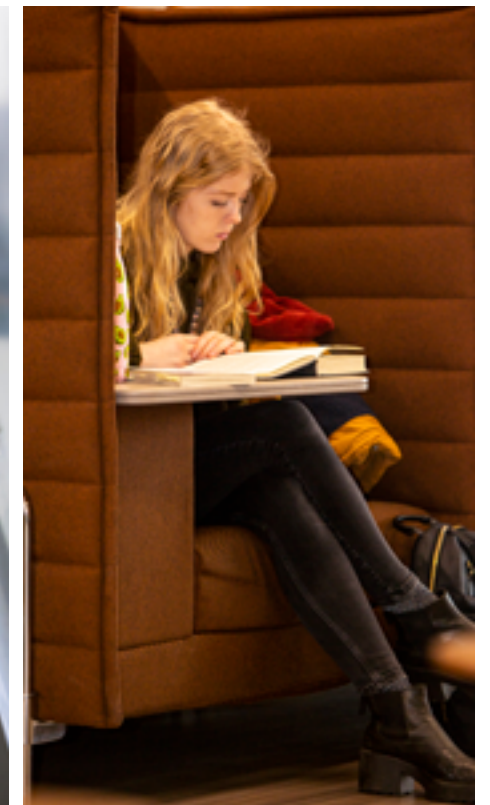
- more silent and quiet group study spaces, and room for group working
- a new cafe, including an outdoor seating area
- a new automated service to make borrowing and returning books quicker and easier
- print hubs on five floors
- better building sustainability.

The Library is open 24 hours a day² during term time, giving you access to print and digital resources, and search facilities to help you find books, journals and other materials. Support for your studies is available via the Research Engagement Team as well as academic liaison librarians, and Study Advice and Maths Support teams.

MUSEUMS AND SPECIAL COLLECTIONS

We are home to the Museum of English Rural Life (MERL), the Ure Museum of Greek Archaeology, and the Cole Museum of Zoology. We also curate collections of archives, rare books and manuscripts, including the:

- Beckett collection
- MERL archives
- Archive of British Publishing and Printing (1800 to the present).



¹ The subject-specific facilities listed on this page are accessible to students on relevant PhD courses. To find out more about facilities available in your chosen area of study, please visit our website.

² Except Saturday nights.

REAL-WORLD IMPACT

Our experts are investigating – and finding solutions for – global issues, such as tackling climate change, improving human health, providing food security, and understanding human culture.

DIAGNOSING HEART ATTACKS

There are around 200,000 heart attacks in the UK every year, but many more patients suffer symptoms. Knowing the difference between a muscle strain and a heart attack can be the difference between life and death, yet standard tests can take six to 12 hours. Thanks to technology created by Dr Alexander Edwards from the School of Pharmacy, it will be possible to diagnose a heart attack at a patient's bedside in just 30 minutes.

A TASTE OF HEALTHIER FOOD

Smoked food tastes great, but some consumers may worry about the very low levels of cancer-causing chemicals that can be found in the smoke. Dr Jane K. Parker, Associate Professor and Director of the University of Reading Flavour Centre, works with food producers to analyse and generate delicious smoky flavours without the unwanted chemicals.

KEEPING CHILDREN SAFE

Children are vulnerable in war zones, and not just from bullets and bombs. All too often, children can fall prey to sexual abuse – including from those who are supposed to protect them. Professor Rosa Freedman is working with the United Nations, governments and non-governmental organisations to help enforce tighter rules around human rights, keeping children safe from abuse.

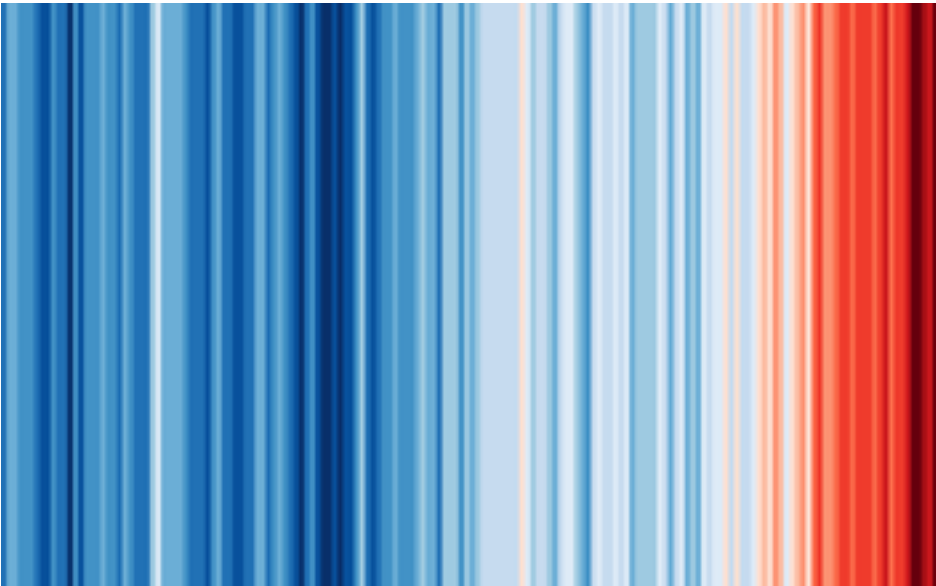
A BLUEPRINT FOR PUBERTY

At a time when many researchers were sceptical about the benefits of studying child and adolescent remains, Professor Mary Lewis was pioneering the field. Her analysis of large collections of adolescent skeletal remains has unearthed fundamental information about puberty and the lives of adolescent groups in medieval England.



CLIMATE STRIPES

People around the world have seen the striking blue-and-red climate graphics created by Professor Ed Hawkins. These graphics illustrate how average temperatures have risen across the globe from 1850 to today, providing a stark representation of how human action is heating the planet. You can generate and share graphics tailored to your own location at www.showyourstripes.info.



DOCTORAL COMMUNITY

When you join Reading as a doctoral student, you'll receive a warm welcome into our diverse community.

We'll help you connect with your fellow researchers, access training and support, and keep you updated on the many opportunities to get involved with the Graduate School. Find out more about our doctoral researchers and their experiences at www.reading.ac.uk/our-phd-students.



"Reading offered the perfect balance between my research interests, my career aspirations and my personal life expectations. The town offers a great quality of life at an affordable cost and a lively local and international community. And London is just half an hour away – perfect to enjoy a big-city getaway every now and then."

Marcello de Maria, PhD researcher in the School of Agriculture, Policy and Development

The Graduate School is the hub of all doctoral activity at Reading – and at its heart is Old Whiteknights House, a dedicated building for PhD students like yourself to work, network, and receive training.

You'll become part of a community of doctoral researchers, one that will champion your academic and social interests in a supportive environment.

- **Join.** You'll automatically become a member of the Graduate School when you join the University of Reading, whether you're based here or off campus.
- **Connect.** Our Graduate School is a thriving multidisciplinary and multicultural community in which you can exchange ideas with fellow researchers, and broaden your horizons. We also organise a variety of social and networking events.
- **Learn.** Take part in our personal and professional skills research training and the extensive Reading Researcher Development Programme.



GRADUATE SCHOOL

OLD WHITEKNIGHTS HOUSE

Located on the University's award-winning Whiteknights campus, Old Whiteknights House is a beautiful, modernised Victorian building with:

- secure access 24 hours a day
- allocated and hot-desk study space
- areas to network and relax.

It is also home to our team of experienced and helpful support staff, who deal exclusively with doctoral research matters and administration.

SUPPORTIVE AND SUCCESSFUL COMMUNITY

- 98.7% of Reading PhD students who submit their thesis are awarded a doctorate.¹
- 98% of international postgraduate respondents indicated that they were satisfied with the support provided by the University of Reading Graduate School.²

"I chose the University of Reading for my PhD because it allows me to conduct research based on my own interests and also provides great support and training through the Graduate School. I have a personal study space in the same office as other international PhD students who have similar interests and passions to me."

Ponjan Pinpart, PhD in Agricultural and Food Economics



¹ University of Reading Doctoral Examination Outcomes, 2013/14 to 2017/18.

² International Student Barometer, i-graduate, 2018.

As a doctoral student at Reading, you'll be invited to take part in our annual Doctoral Research Conference.

This event will showcase and celebrate your achievements and is an excellent professional development opportunity to network with fellow researchers, receive recognition from the academic community, and raise awareness of your work.

The conference also hosts presentations from the PhD Researcher of the Year Award finalists, with the winner announced on the day.

Other highlights include:

- the Research Image competition
- the Poetry, Rhyme and Rap competition
- the popular Three Minute Thesis competition – an entertaining challenge for our researchers to deliver engaging talks on their thesis topics against the clock.

Learn more about doctoral events at www.reading.ac.uk/gs-events.

"The Graduate School provides support and development opportunities. Students can only benefit from the extensive range of courses for different interests and stages. All of the courses, and the doctoral research conference, were a great opportunity to network and learn from other doctoral researchers' and lecturers' experiences."

Marie-Theres Zeuner,
PhD in Pharmacy

DOCTORAL RESEARCH CONFERENCE



SKILLS AND TRAINING

The Graduate School works in partnership with academic schools and departments to provide you with skills training to support your research.

READING RESEARCHER DEVELOPMENT PROGRAMME (RRDP)

The RRDP offers more than 70 face-to-face professional training courses, as well as a suite of high-quality online courses. You'll develop transferable skills to support you, both within and outside of academia.

Opportunities include:

PREPARING TO TEACH

Run in partnership with the Centre for Quality Support and Development, this course enables you to develop the skills you need to contribute to teaching and learning activities in the University, as well as for a potential career in academia. Doctoral researchers who teach or support learning, and who meet the eligibility criteria, can apply for Associate Fellow of the Higher Education Academy (AFHEA) status.

LEADERSHIP PROGRAMME

Created in partnership with the triple-accredited Henley Business School, this three-day course explores and strengthens your leadership capabilities as a doctoral researcher.

SPRINT

Specifically designed for female doctoral researchers, Sprint builds your confidence and networking skills, encourages you to focus on your career and life goals, and supports you to achieve a better work-life balance.

STATISTICS

The Graduate School Statistical Advisory Service (SAS) provides support to doctoral researchers needing help with statistics during the course of their doctoral studies.

For more information about the full range of training courses, visit www.reading.ac.uk/gs/training-and-development.

"I signed up to the RED Award to improve my employability skills and to gain a social life outside the busy lab-based PhD life. This award has helped me to improve my confidence in communicating with people and I strongly believe that this will help me with my career going forward."

Kwasi Asante,
recent graduate

LEARN A LANGUAGE

Whatever your area of research, you can enhance your studies and future career prospects by learning a language in your spare time for a subsidised fee. You can start from beginner's level, or continue a language you already know to a higher level.

We offer modules in:

- Arabic
- Chinese (Mandarin)
- French
- German
- Italian
- Japanese
- Modern Greek
- Russian
- Spanish
- British Sign Language.

For more information, visit www.reading.ac.uk/IWLP.

ACADEMIC ENGLISH PROGRAMME (AEP)

The International Study and Language Institute, in conjunction with the Graduate School, offers a range of thesis writing programmes for international/EU PhD students. For further information, visit www.reading.ac.uk/thesis-writing.

There is also a range of general AEP courses on written and spoken academic communication.

For more information, visit www.reading.ac.uk/aep.

CAREERS AND EMPLOYABILITY

Manage living costs and gain valuable work experience by working around your studies. We work closely with the central Careers Team to provide you with training and development opportunities.

You will have access to:

- Campus Jobs – our central hub for all temporary, part-time work at the University – which features one-off jobs and regular shift work, such as joining our team of student ambassadors or working in one of our cafes
- support in finding part-time work off campus, through an online portal which advertises more than 1,000 jobs a year
- an annual part-time jobs fair, hosting around 30 employers
- volunteering opportunities, work experience and a specialist training programme through our Reading Experience and Development (RED) Award, which will help you build an impressive skills portfolio.

GRADUATE TEACHING ASSISTANT POSTS

There are opportunities to undertake teaching activities while you study. These roles are full-time and fixed for a period of four years, during which you will be paid a salary and stipend. We welcome applications via the University's online jobs portal and selection is competitive.

For current vacancies, visit www.reading.ac.uk/jobs.

SPECIALIST ADVICE

The Library offers a range of expert support services, including:

- the Research Engagement Team
- Academic liaison librarians
- Study Advice
- Maths Support
- IT support.

Find out more at www.reading.ac.uk/library.



ACCOMMODATION

We offer a range of quality accommodation options to suit your needs and budget.

University accommodation at Reading is safe and secure. Rooms are available on, or close to, our Whiteknights and London Road campuses.

You may prefer to find private accommodation, in which case there are plenty of options near to the University. The Students' Union provides information to support your search and help you to gain an idea of location, price and availability.

For more information, visit www.reading.ac.uk/private-accommodation.

UNIVERSITY ACCOMMODATION

Our rent prices are all-inclusive, meaning that your utility bills, Wi-Fi and basic contents insurance¹ are included. There are many benefits to choosing to stay in University halls:

- **Variety.** Choose from quieter lifestyle areas, single-gender flats, accommodation for mature students, couples and families, and a number of adapted rooms for students with disabilities and special requirements.²
- **Flexibility.** Standard contracts are 40 weeks or 51 weeks. A limited number of other length contracts are also available. If your studies continue into the summer months, requesting a 51-week contract will ensure you retain the same accommodation throughout the year.³
- **Security.** All halls have dedicated security patrols and CCTV.
- **Support.** Our 24/7 Halls Hotline ensures any halls-related issues are dealt with quickly and efficiently. Plus, friendly, experienced staff wardens will support your welfare while in halls.

We want you to live in the type of accommodation that works best for you, so we offer a wide variety of room types to suit a range of budgets and needs.⁴ See overleaf for an indication of the types of rooms available.

ACCOMMODATION GUARANTEE

You will be guaranteed a place in halls if you are a new full-time postgraduate who has:

- accepted an offer from the University
- applied for accommodation by 1 August of your year of entry
- satisfied any conditions of your academic offer by 31 August of your year of entry.

Other restrictions and requirements may apply.

For full details and to view our accommodation guide online, visit www.reading.ac.uk/university-accommodation.





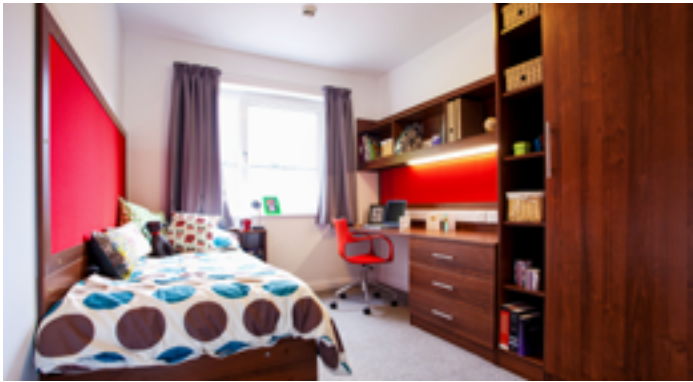
ROOM WITH SHARED BATHROOM

From £130.55 per week (self-catered) to £168.42 per week (catered).



EN-SUITE ROOM

From £159.95 per week (self-catered) to £199.92 per week (catered).



PREMIUM ROOM WITH SHARED BATHROOM

£143.50 per week (self-catered).



PREMIUM EN-SUITE ROOM

£182.98 per week (self-catered).



TOWNHOUSE ROOM

£159.95 to £163.80 per week (self-catered).



STUDIOS

From £205.45 to £224.00 per week (self-catered).

¹ The basic level of contents insurance covers items in your room for fire, theft and flood. We recommend that you check the insurance policy carefully to make sure it meets your needs. The policy has several restrictions, such as your laptop not being covered outside of your room. However, the insurance can be extended and personalised – for example, to cover your bike or laptop and/or items anywhere in the UK. The insurance will cover you for the 31 weeks of term only.

² Subject to availability.

³ Extending a 40-week contract can require you to move into different accommodation.

⁴ Details are accurate at the time of going to print. Please be aware that prices listed are for 2020/21 and are subject to increase for 2021/22. We cannot guarantee that all room types or rents will be available at the time of booking if demand is high. Please refer to the accommodation policy at www.reading.ac.uk/accommodation for further details.



SUPPORT SERVICES

You can rely on our wide range of support services. They work together to provide help and advice throughout your studies.

CAREERS AND EMPLOYABILITY

Our Careers Team provides training and development opportunities. Find out more on pages 28-29.



CHAPLAINCY

The Chaplaincy offers emotional support to all students, and acts as a signposting service for all different faiths, with information about places of worship, both on campus and in Reading. Visit www.reading.ac.uk/chaplaincy.



COUNSELLING AND WELLBEING

As well as having access to free, 24/7 online support through Big White Wall, an online mental health service, we offer one-to-one meetings, group therapy sessions and other online resources. Visit www.reading.ac.uk/counselling.

DISABILITY ADVISORY SERVICE

The Disability Advisory Service offers advice and guidance to students with any disability, mental health condition, or specific learning difficulty. With your permission, the team can liaise with appropriate staff to coordinate support for you. For more information, please email disability@reading.ac.uk.



HALLS ACCOMMODATION

Students living in University halls of residence are supported by hall wardens and mentors, the Halls Hotline and the Accommodation Office. See pages 30-33 for more information.

INTERNATIONAL/EU STUDENT ADVICE

Get help settling into life and study in the UK, as well as visa and immigration advice. For more information, see pages 36-39.



STUDENT FINANCIAL SUPPORT

You'll have access to a wide range of services to help you manage your money and get financial advice when you need it. Speak to our Student Financial Support Team about fees, scholarships, financial hardships, effective budgeting, and more. You can also use our e-learning platform Blackbullion (www.blackbullion.com), and speak to the Students' Union's specialist money advisers.

LIBRARY AND IT SERVICES

All courses have a dedicated liaison librarian to help you find the materials you need. There are also Study Advice and Maths Support teams to support your studies, and our IT Support Team can help with any technical queries you have. Visit www.reading.ac.uk/library and www.reading.ac.uk/it for more details.



WELFARE TEAM

The Student Welfare Team can help with a range of personal and welfare issues, including homesickness, family and relationships, drugs and alcohol, and more. For more details, visit www.reading.ac.uk/welfare-team.

CHILDCARE

If you have children, there are excellent childcare facilities on and near campus, including a pre-school and day nursery. For more details, visit www.reading.ac.uk/childcare.



MEDICAL CENTRE

Located a short walk from our Whiteknights campus, the Centre offers a full range of services, from general GP appointments to specialised clinics.

To find out more about all these services, visit www.reading.ac.uk/support.

INTERNATIONAL AND EU STUDENTS

We have years of experience in welcoming students from around the world, and will work hard to help you feel at home from the moment you arrive.

AMONG THE TOP 30 UK UNIVERSITIES

We are ranked 27th out of 84 UK universities featured in the QS World University Rankings, 2021.¹



A TRULY GLOBAL COMMUNITY

Join more than 5,000 international students from around 180 countries.

¹ The University of Reading is ranked 205th overall out of 1,002 institutions.

² Whiteknights campus has been awarded nine consecutive Green Flag awards, 2011–2019.



CENTRAL LOCATION

Reading is 22 minutes from London Paddington by train and 45 minutes from Heathrow airport by coach. As well as excellent international transport links, it is the perfect location for sightseeing in nearby Windsor, Oxford and London.



VISA SUPPORT

Dedicated immigration advisers on campus provide specialist advice on visas, including working during or after your studies. Visit www.reading.ac.uk/visa-support for details.



SAFE CAMPUS ENVIRONMENT

Our main campus is set in 130 hectares of beautiful parkland. It has been recognised as one of Britain's top green spaces², and benefits from 24-hour security.



We aim to support you at every stage – ahead of your move to the UK, during your time with us, and beyond.

The following information aims to make planning your move to Reading as simple as possible.

BEFORE YOU ARRIVE

You will be provided with pre-arrival information – often through briefings delivered by members of University staff, and via the Me@Reading applicant portal. The portal is an online resource that provides updates and information as you finalise your admission. In some countries, we also host face-to-face pre-departure events. Find out if you can meet us in your country at **www.reading.ac.uk/meet-us-in-your-country**.

Find out more by visiting **www.reading.ac.uk/international** or contact us via **+44 (0) 118 378 3838** or at **www.reading.ac.uk/question**.

STaR MENTOR PARTNERSHIP

You can apply to be partnered with a STaR international mentor before you arrive at Reading.

Our mentors are current international and/or postgraduate students who have been trained to help you settle into life in the UK and at the University. They can share their own experiences and insights, answer many of the questions you may have before you arrive, and support you throughout your first term – either in person or via email.

For more information and to register your interest, email **starmentors@reading.ac.uk**.

MEET-AND-GREET SERVICE

If you're arriving at London Heathrow airport, our meet-and-greet service will be available at set hours during Welcome Week.

WELCOME PROGRAMME

A programme of social events, tours and information will help you settle into life in Reading and the UK. These include:

- academic events
- information sessions – covering everything from study advice to settling in
- maps of Reading
- guides to opening a bank account
- details of students' union events and more.

UK HEALTHCARE

If you're from outside the UK and studying a programme that lasts longer than six months, you're entitled to medical treatment here in the UK. You may need to pay a healthcare surcharge as part of your immigration application. Find more details at **www.gov.uk/healthcare-immigration-application**.

Currently, EU students holding a European Health Insurance Card (EHIC) can access state-provided healthcare. At the time of going print, the UK government has not yet confirmed what arrangements will be in place for EU students starting their degrees in 2021/22.

Up-to-date information and advice on the outcomes of Brexit can be found at **www.ukcisa.org.uk**.



While you're here, we'll support you to thrive – both academically and socially. There are plenty of ways to stay in touch with your culture, gain a strong start in your studies, and feel at home, allowing you to make the most of your new life in the UK.

As well as all the support described on pages 34-35, you'll have dedicated help from an international student adviser.

DEDICATED SUPPORT WHILE YOU STUDY

Our International Study and Language Institute (ISLI) is one of the longest-established institutes of its kind in the UK. It provides internationally recognised English language programmes designed to help you achieve your academic potential as well as make the most of your time here.

ACADEMIC ENGLISH PROGRAMME (AEP)

The AEP is open to all international/EU students and comprises writing classes, academic grammar, speaking, listening and pronunciation sessions, social English, and a one-to-one tutorial service. In conjunction with the Graduate School, the AEP also offers a number of dedicated, year-round courses, specifically focused on the skills and language needed to write a doctoral thesis.

FOLLOW US

-  **facebook.com/uniofreading.int**
-  **[@uniofreading_int](https://instagram.com/@uniofreading_int)**
-  **www.weibo.com/readingchina**

PRE-SESSIONAL ENGLISH

If there is an English proficiency condition stated in your offer of admission, the best way to meet the language requirement is to attend our Pre-sessional English Programme. Six entry points are offered throughout the year by ISLI for varying periods of study, and to support students with all kinds of linguistic ability.

For current information on programme dates, duration and fees, visit **www.reading.ac.uk/ISLI/pre-sessional**.

INDEPENDENT LANGUAGE LEARNING

The Self-Access Centre for Language Learning is a dedicated library and study centre, with resources to support you in learning another language. You will have access to audio and video resources in English, and materials in many other languages including Arabic, Chinese (Mandarin), Japanese, and several European languages.

For more information, visit **www.reading.ac.uk/sacll**.

PHD PLUS PROGRAMME FOR OVERSEAS LECTURERS

This programme is designed to meet the needs of overseas lecturers who want to study for a PhD while learning about higher education in the UK and improving their teaching skills. It is offered at no extra cost.

Further information is available at **www.reading.ac.uk/phd-plus**.

A TASTE OF HOME

Our cafeterias and restaurants on campus provide for different dietary needs, and self-catered accommodation will enable you to cook your own meals. You can buy supplies in the shops here on campus, and Reading town centre has a wide range of specialist food shops and restaurants from many countries.

SOCIETIES

Meeting people from your own country and staying in touch with your culture is easy when there are so many student societies, including faith-based groups. Our societies include people from all countries, so no matter where you're from, you will be warmly welcomed within any group. Head to **www.rusu.co.uk/activities** to find out more.

"I would recommend the University of Reading because you really learn to study independently in a wonderful and supportive environment. You can also learn more about the world and other cultures, and improve your language skills."

Yuanyuan Wang, recently awarded a PhD in Chemistry

FUNDING

We have a range of options to help support your doctoral studies.

SCHOLARSHIPS AND BURSARIES

Each year, we award approximately 150 entry awards – across all subject areas – to high-quality doctoral candidates.

These scholarships and bursaries are funded from a variety of sources, including the University, UK Research and Innovation (UKRI) research councils, industry, and charities. Many are full awards, and others offer partial support, such as our fees-only awards. While some awards are available for all students, others may be aimed at specific subject areas, or students from overseas, the EU or the UK.

Awards that are available across all subjects include ones dedicated to:

- supporting professionals to undertake part-time PhD research alongside their work
- supporting people in our local community to pursue doctoral study with us through our regional bursaries.

Some scholarship competitions require you to have received an offer of admission from us by a specific date, so make sure you apply in good time for a decision to be made.

HENLEY BUSINESS SCHOOL

If you're interested in a business or finance-based PhD, Henley Business School offers a number of full and partial scholarships for full-time research students, awarded on the basis of academic merit. These are available across all areas of Henley's research, including business informatics, systems and accounting, marketing, finance, and real estate and planning.

In 2020/21, a full scholarship covered fees and a stipend of up to £15,000 in year one, and was renewable for another two years, subject to progress.

At the time of going to print, details for scholarships starting in 2021/22 have not yet been confirmed.

Please note that closing dates for scholarships vary between the different areas. To find out more, visit www.henley.ac.uk/scholarships/phd-scholarships-all.

DOCTORAL TRAINING PARTNERSHIPS

Many of our departments currently receive studentship funding from research councils, which is awarded to eligible applicants (typically UK and EU¹ nationals) on a competitive basis. We have active doctoral training partnerships within the following research areas.

ARTS AND HUMANITIES RESEARCH COUNCIL (AHRC) SOUTH, WEST AND WALES.

Archaeology | Art | Classics | English Language and Applied Linguistics | English Literature | Film, Theatre & Television | History (and Early Modern Studies) | Languages and Cultures | Law | Philosophy | Politics and International Relations | Typography

BIOTECHNOLOGY AND BIOLOGICAL SCIENCES RESEARCH COUNCIL (BBSRC) FOODBIOSYSTEMS.

Agriculture | Biological Sciences | Biomedical Sciences | Chemistry | Food and Nutritional Sciences | Geography and Environmental Science | Pharmacy

ECONOMIC AND SOCIAL RESEARCH COUNCIL (ESRC) SOUTH EAST NETWORK FOR SOCIAL SCIENCES (SENS).

Agriculture, Policy & Development | Built Environment | Economics | Education | Law | Linguistics | Management and Business Studies | Politics and International Relations | Psychology | Real Estate and Planning

NATURAL ENVIRONMENT RESEARCH COUNCIL (NERC) SCENARIO.

Agriculture, Policy & Development | Archaeology | Biological Sciences | Chemistry | Geography and Environmental Science | Mathematics and Statistics | Meteorology

FIND FUNDING

Visit our Graduate School's website for a comprehensive list of the various funding opportunities available: www.reading.ac.uk/gs/funding-and-fees.

It is updated regularly, so make sure to check throughout the year. You can also follow @UniRdg_PhD on Twitter to hear about updates.

ALUMNI DISCOUNT

If you completed your undergraduate or master's degree with us, you're entitled to a discount on your PhD degree at Reading.

You'll automatically receive a £1,500 reduction on the cost of your programme fees.



DOCTORAL LOANS FOR UK STUDENTS²

You can currently borrow up to £26,445 through a repayable government loan scheme for doctoral study starting on or after 1 August 2020.³

Loans are available for students:

- studying in the UK on doctoral research programmes
- under the age of 60
- who don't already have a PhD or equivalent qualification
- who won't be receiving a research council living allowance.

The loan is not based on your or your family's income. It is paid directly to you and divided equally across each year of your study, so you can use it to help cover your research programme fees and living costs.

See www.reading.ac.uk/gs-doctoral-loans for more information.

PART-TIME WORK

Our Careers Team and Campus Jobs portals advertise a wide range of part-time work, from opportunities on campus to jobs in Reading. These can supplement your income and help with living costs while developing new skills. See page 29 for more information.

GRADUATE TEACHING ASSISTANT POSTS

Study for a PhD while undertaking teaching activities in a related subject. These roles are full time for a fixed period of four years, and you'll be paid a salary and stipend. For current vacancies, see www.reading.ac.uk/jobs.

"I've had the opportunity to try a variety of roles, which have highlighted my strengths and areas for development. Although my research is in the School of the Built Environment, I have had the chance to support academics at the Henley Business School as a Research Assistant, and I've also worked as a Student Ambassador."

Yusuf Ibraheem, PhD in Construction Management and Engineering

¹ Research council funding is currently open to EU nationals (resident in the UK for the past three years) starting doctoral study in 2020/21. Arrangements for 2021/22 onwards may change based on advice from the UK government. Keep up to date at www.ukri.org/funding and see page 42 for more information for EU applicants.

² Access to loans and other financial support from Student Finance England has changed for EU students starting their degrees in 2021/22. See page 42 for details.

³ You will need to repay your postgraduate doctoral loan at the same time as any other student loans you may have. Further eligibility criteria apply, and loan amounts are subject to change for those starting doctoral study in 2021/22.

FEES

RESEARCH PROGRAMME FEES

Fees for research programmes, including PhD degrees, are typically paid in two instalments each year: 50% on enrolment and 50% at the start of the second term of your studies.

UK/HOME STUDENTS

Fees for UK/home students commencing their programmes in 2021/22 have not yet been set. This is because the University aligns its fees with the levels set by Research Councils UK (RCUK), which will not be published until early 2021.

However, we have provided details about fees for 2020/21 to help you budget and plan for your time at Reading. Please note that these figures are indicative only and actual fees will increase from these levels. Please check our website from February 2021 for the most up-to-date fee information: www.reading.ac.uk/gs/funding-and-fees.

Type of position	Fees
Full-time at the University	To be confirmed for 2021/22 Fees for 2020/21 were £4,407 per year
Full-time PhD by Distance ¹	To be confirmed for 2021/22 Fees for 2020/21 were £2,204 per year
Part-time at the University	To be confirmed for 2021/22 Fees for 2020/21 were £2,204 per year
Part-time PhD by Distance ¹	To be confirmed for 2021/22 Fees for 2020/21 were £1,102 per year
Ad-hoc/visiting research student	To be confirmed for 2021/22 Fees for 2020/21 were £2,204 per year

EU STUDENTS

On 23 June 2020, the UK government announced that EU, EEA and Swiss nationals and their family members will not retain their current entitlement to home fee status or financial support from Student Finance England for degrees starting in the 2021/22 academic year. It is currently unclear whether RCUK will announce new fees and funding arrangements for EU students, and therefore, at the time of going to print, the University of Reading has not yet confirmed EU tuition fees for 2021/22. We expect to publish details on our website by October 2020.

EU students will always be welcome at the University of Reading, and we are working hard to minimise barriers to pursuing postgraduate education with us. For advice on the impacts of Brexit on studying at Reading, visit www.reading.ac.uk/brexit.

INTERNATIONAL STUDENTS

If you're an international fee-paying student undertaking a full-time research programme based at Reading, your tuition fees will be fixed for three years to help you budget and plan for your time at Reading. Fees for international students starting programmes in the 2021/22 academic year are confirmed below.

Type of position	Band 1	Band 2
Full-time at the University	£17,320 per year	£20,830 per year
Full-time PhD by Distance ¹	£8,660 per year	£10,415 per year
Part-time at the University	£8,660 per year	£10,415 per year
Part-time PhD by Distance ¹	£4,330 per year	£5,208 per year

Generally, Band 1 subjects do not involve laboratory work, whereas Band 2 subjects usually involve significant laboratory study or workshop content. Contact us at www.reading.ac.uk/question to find out more.

PROFESSIONAL DOCTORATE FEES

The fees for 2020/21 are provided here for guidance. The fees are likely to increase for 2021/22 entry, so please check our website for the most up-to-date information.

	UK/home fees	International fees
DBA Doctor of Business Administration	£11,250 per year ²	£11,250 per year ²
EdD Doctorate in Education (February 2020)	£3,300 per year	£9,000 per year

RESEARCH EXPENSES

Some research programmes, particularly in the sciences, charge a research expenses fee to cover costs for additional facilities and consumables. This fee will normally be charged on an annual basis, and will be quoted in your Offer of Admission letter.

OTHER PROGRAMME COSTS

Contact the school or department you plan to join about any additional programme costs, such as research-related travel and other research expenses fees.

GET THE LATEST FIGURES

Some of the information on these pages is based on 2020/21 figures, which are likely to increase for 2021/22 entry.

For the most up-to-date information, visit www.reading.ac.uk/gs/funding-and-fees.

¹ PhD by Distance means studying at an approved institution at another site (normally overseas). This may apply when the research project requires substantial access to resources and facilities located away from Reading, when you have employment commitments relevant to your research that prevent you from being based in Reading, or when it has been agreed as part of a specific partnership/sponsorship arrangement.

² DBA fees will be fixed at this rate for three years from the commencement date, but further years' fees, including the continuation fee, will be charged at the current intake's rate. In 2020/21, this was £3,750, up to a normal maximum of 12 months' continuation.

RESEARCH AREAS



AGRICULTURE, POLICY & DEVELOPMENT



The School of Agriculture, Policy and Development has a world-leading reputation for research.

- We're ranked 9th in the world for Agriculture and Forestry – and we're the only UK institution in the global top 50.¹
- 45% of our research has been judged world leading and a further 36% has been rated internationally excellent.²
- Founded in 1892, we've been contributing to agricultural education and research for more than a century.

Join PhD students and staff from more than 40 countries and receive supervision from internationally recognised researchers. You'll have access to our dedicated graduate offices and research facilities, including laboratories, glasshouses and controlled environment facilities, along with the University farms where we focus on crop and dairy research.

Animal, dairy and food chain sciences

Research animal-derived food products to make a positive contribution to human nutrition, explore how to support long-term health, produce welfare-friendly food, and minimise environmental pollution and production costs.

Crop sciences

Enhance quality crop yields to feed a growing human population – without irreversible degradation of natural resources in a changing environment. Your research will benefit from advanced experimental facilities and novel crop-modelling techniques.

Ecology and agri-environmental research

Study the conflicts between agricultural production and environmental protection, and work with academics on biodiversity conservation and ecosystem service delivery in managed landscapes.

Agricultural, environmental and food economics

Address critical policy issues around the global food chain, including food production and consumption, human diet, nutrition and health, and the intersection of people and the natural environment.

Consumer behaviour and food marketing

Use social sciences and psychology to address consumer and farmer attitudes as well as behaviour marketing related to food and other product areas. These include fashion, IT, food-related human health issues, animal health and welfare, farm-level management, and agricultural and food policy.

International and rural development

Apply social science theories and methods to understand human and social dimensions of economic and technological change. The UN 2030 Agenda for Sustainable Development provides a backdrop for much of our research in this area. We have staff and students engaged in research in the UK and more than 20 countries in Africa, Asia and Latin America.

Find your supervisor
www.reading.ac.uk/apd-team

Find out more
www.reading.ac.uk/apd-phd

Find funding
See page 40

¹ QS World University Rankings by Subject, 2020 – Agriculture & Forestry.

² REF 2014 – Agriculture, Veterinary and Food Science.



ARCHAEOLOGY

Join a department at the forefront of social and scientific research into issues of cultural and environmental importance.

- 97% of our research overall has been judged to be world leading, internationally excellent or internationally recognised.¹
- We are in the top 10 UK universities for Archaeology in world rankings.²

FACILITIES AND SUPPORT

You'll have access to dedicated laboratories, advanced scientific facilities, and research collections, as well as in-School training and supervisory expertise for research on:

- palaeoclimate and human-environment interactions
- mobility, diet and health
- palaeopathology and the life course
- zooarchaeology, geoarchaeology, experimental archaeology and buildings archaeology
- studies of material culture, identity, and past ritual and religion.

RESEARCH AREAS

Our expertise spans the Palaeolithic of Europe to the medieval period, and regions of the world including the UK, Europe, Middle East, North Africa, South America and China.

Landscape, climate and lived environment

Combine palaeoclimate expertise with examinations of human-environment interactions, landscapes, responses to climate change and lived experience in rural and urban built environments.

Diet, health and life course

Explore the intersections between diet, health and life course to understand lived experience in the past. Research diet and food as expressions of identity, life history and health; the individual and group experience of illness, disability, and migration; and the biology of the life course.

Objects, materials and people

Study past material culture, exploring the relationships between objects and people and developing materials science and experimental archaeology. Explore the values of artefacts, production and deposition of objects, mobility and cultural identity, and the representation of objects in the contemporary world.

Medieval social archaeology

Address cultural questions about medieval European societies and take interdisciplinary approaches to bridging the sciences and humanities. This research cluster is currently leading an international network on medieval religious transformation.

Find your supervisor
www.reading.ac.uk/arch-team

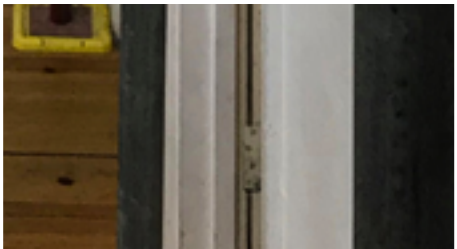
Find out more
www.reading.ac.uk/arch-phd

Find funding
See page 40

¹ REF 2014 – Geography, Environmental Studies and Archaeology: A – Archaeology.
² QS World University Rankings by Subject, 2020. We are the 8th highest ranked UK university and 37th in the world.



ART



Join the Reading School of Art, a community of artists and curators that will allow you to study full time or part time, and encourage you to explore and develop your practice as you contribute to art's wider public discourse.

We make a distinctive contribution to creative knowledge through practice-led, theoretical, and art historical modes of enquiry, and many of our academics regularly exhibit work or curate exhibitions at prestigious international institutions.

You'll also discover a diverse range of contemporary debates, critical concepts and practices through seminar discussions, group presentations, artist lectures, and artistic work.

PRACTICE-BASED RESEARCH

At Reading, we focus on research as art practice – even if your practice is writing. You'll have regular supervision from two supervisors, and meet twice a term for colloquia to discuss your research. Each summer term you can take part in a student-organised symposium, to which high-profile speakers are invited. Our doctoral researchers have joined international seminars in London and Zurich as part of our curatorial partnership with Zurich University of the Arts, and have gotten involved in events held with our partner, London's Tate Gallery.

We also provide in-house training in practice-based research as well as opportunities for teaching and lecturing in higher education.

RESEARCH AREAS

Within the fields of contemporary art, art history and curating, key areas of focus include:

- exhibition and curatorial practice
- publication projects and critical art writing, underpinned by an emphasis on digital technologies as a format for the production, dispersion and interpretation of art
- post-colonialism and de-colonisation
- artist films and sound art
- post-conceptual practice
- performance and subjectivity
- theories of labour, feminism and radical art pedagogy
- the production and reception of contemporary art
- exploring the interlinking roles of artist, curator and writer
- the transforming categories of practice, theory and criticism
- socially engaged, collaborative and participatory practice.

Find your supervisor
www.reading.ac.uk/art-team

Find out more
www.reading.ac.uk/art-phd

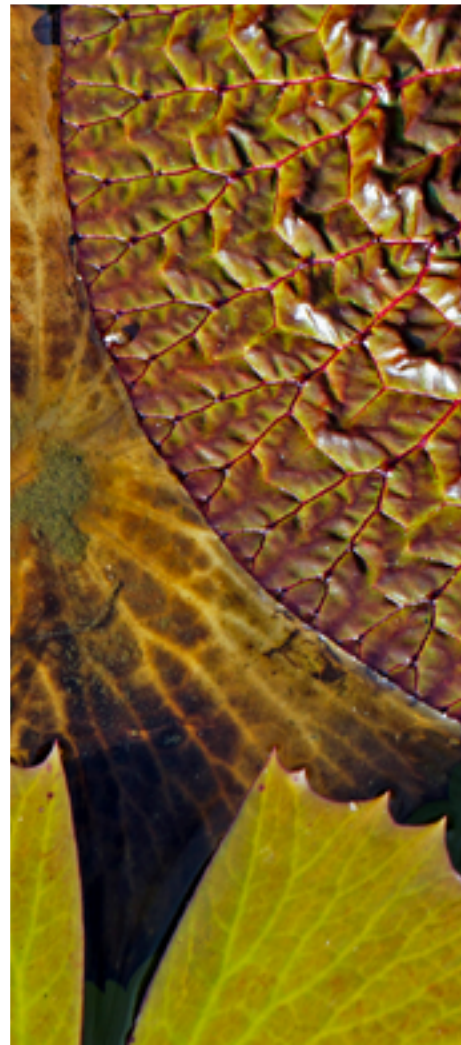
Find funding
See page 40



Explore the fundamental aspects of the living world and humanity's interactions with it.

You'll conduct high-impact research that addresses the global challenges faced by society and the natural environment.

BIOLOGICAL SCIENCES



RESEARCH FACILITIES

- Health and Life Sciences building – we've invested £60m in our new building, providing dedicated research laboratories and study space.
- Cole Museum of Zoology – home to 3,500 specimens and research facilities.
- Herbarium – one of the largest and most diverse herbariums in the country, containing more than 300,000 specimens and a collection of botanical artwork.
- Whiteknights campus – more than 300 acres of woodlands, lakes, gardens and meadows, providing a rich environment for biological scientists.

SUPPORT AND DEVELOPMENT

We offer plenty of opportunities to build your research network and develop the impact of your work, including:

- publishing your research in high-impact journals
- organising outreach and public engagement activities
- presenting at international conferences and our annual PhD symposium.

Ecology

We study the interactions between species and their environments that influence abundance and distribution, and we employ mechanistic process modelling, Bayesian statistics and high-performance computing to address climate change adaptation, design of habitat networks, and agri-environment schemes.

Evolutionary biology

Using modern analytical tools, we aim to answer fundamental questions about the evolution of plants, animals and microbes. We're developing new statistical methods to incorporate fossils and geographic data into phylogenies, detect natural selection on phenotypes, and probe gene network evolution and adaptive landscapes. We're also advancing understanding of human and cultural evolution by applying phylogenetic methods to ethnobotanical, linguistic and ectoparasite data.

Structural biology and bioinformatics

We explore the structure-function relationships of biomolecules using predictive and experimental techniques to better understand biological systems, and we develop novel computational structural prediction tools and engineer enzymes to enhance their use in industry.

Find your supervisor
www.reading.ac.uk/ecology-team

Find out more
www.reading.ac.uk/sbs-phd

Find funding
See page 40



BIOMEDICAL ENGINEERING



Study for a PhD in Biomedical Engineering and develop your engineering skills and knowledge to address important healthcare challenges.

Our research addresses major healthcare challenges through engineering innovation. Our work spans cybernetics, consumer electronics, computing, robotics, artificial intelligence, medical physics, and neuroscience, and we are engaged in numerous interdisciplinary and international collaborations.

Instrumentation for biological measurement

We are advancing a range of sensing techniques and signal processing algorithms across the electromagnetic spectrum. We work with terahertz spectroscopy to study DNA cell signalling and cellular consequences of terahertz radiation, work which has significant potential for the early diagnosis of diseases such as cancer, diabetes and Alzheimer's. We are also developing new imaging technologies, from multiphoton ultraviolet microscopy for measuring mitochondrial function, to terahertz imaging for medical applications.

Healthcare and rehabilitation technologies

Our research includes developing innovative systems for rehabilitation following brain and spinal cord injury, designing new wearable sensors for long-term healthcare monitoring in Parkinson's disease, user-centred design of computer-based technologies for speech and language therapy, and

brain-computer interfaces for therapies of neurodegenerative diseases.

Systems neuroscience and neural engineering

We employ engineering approaches to develop models of healthy brains and address pathologies affecting the nervous system. We use the newest technologies in biocompatible materials to construct environments for growing populations of neurons, and we research neuroprosthetics and implant technologies that can interface with the nervous system in order to restore lost functionality.

RESEARCH FACILITIES

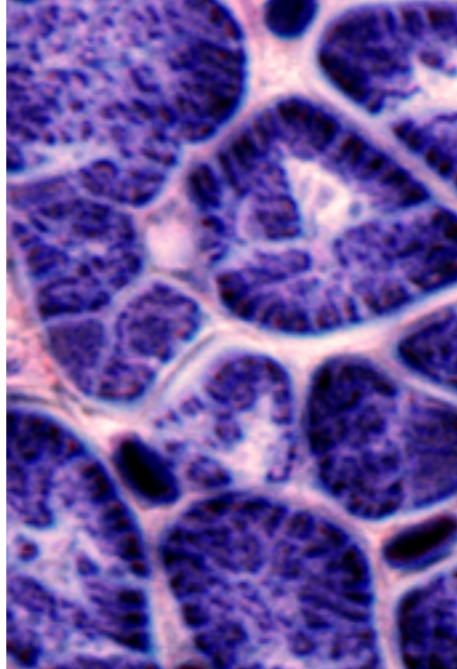
Our strategic research centres offer excellent opportunities for interdisciplinary training:

- The Centre for Integrative Neuroscience and Neurodynamics houses a research-dedicated MRI scanner and MRI-compatible TMS, EEG/ERP, and thermal stimulator for use in pain research.
- The Institute for Cardiovascular and Metabolic Research incorporates human imaging facilities and advanced microscopy suites purpose-built for biomedical research.
- The Institute for Food, Nutrition and Health undertakes a range of research in areas such as cardiometabolic health, brain health, and food processing.

Find your supervisor
www.reading.ac.uk/biomedical-team

Find out more
www.reading.ac.uk/sbs-phd

Find funding
See page 40



Undertake research in microbiology or molecular and cellular medicine with a PhD in Biomedical Sciences at Reading.

You'll join a diverse group of PhD students in our School of Biological Sciences, many of whom are:

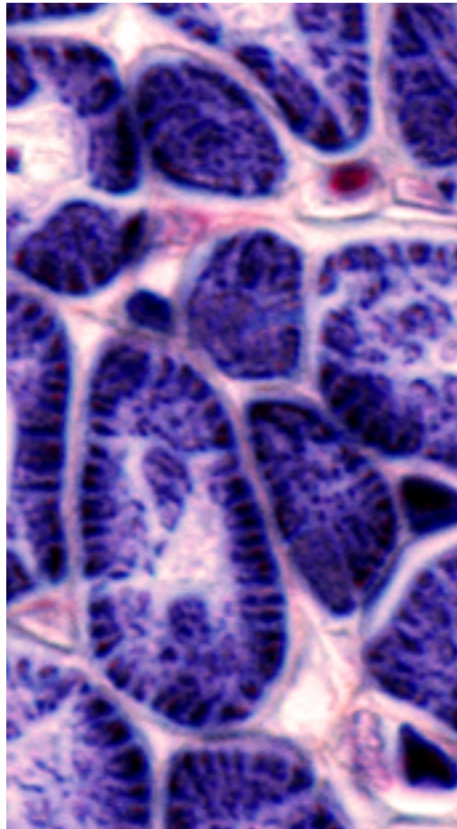
- presenting at international conferences and in-house symposia
- publishing in high-impact journals
- organising public engagement activities.

Endocrinology and development

Research includes:

- skeletal-muscle maintenance and muscle-wasting diseases
- regulation of adrenal function and developmental control of obesity
- hormonal control of social behaviour and anxiety
- dysregulation of ovarian function
- ageing-related dementia, Parkinson's disease
- breast cancer and cancer metastasis.

BIOMEDICAL SCIENCES



RESEARCH FACILITIES

You'll have access to our:

- dedicated microbiology laboratories for the study of bacteria and viruses
- purpose-built imaging suite with confocal and super-resolution microscopes
- excellent computing facilities for computer-intensive work in phylogenetics, bioinformatics, protein structure, evolution and population biology.

Cardiovascular disease

Our Institute for Cardiovascular and Metabolic Research focuses on:

- thrombosis and haemostasis
- cardiac cell biology and physiology
- vascular biology.

Infectious disease

- Study the structure-function of viruses, viral and bacterial proteins, bacterial virulence and gut microbiota.
- Research on transmissible diseases includes foot and mouth disease, haemorrhagic fever, plague, polio, Brucellosis and MRSA infection.

Find your supervisor
www.reading.ac.uk/biomedical-team

Find out more
www.reading.ac.uk/sbs-phd

Find funding
See page 40



Explore the built environment – including architecture, construction and project management, and energy and environmental engineering – at an internationally recognised centre for research.

- The University is ranked 3rd in the UK for research impact in Architecture, Built Environment and Planning.¹
- 83% of our research overall judged to be world leading or internationally excellent.²

At the School of the Built Environment, we aim to make the built environment work better for society, addressing issues such as quality of life, sustainability of communities, wealth generation, and long-term resilience.

INTERDISCIPLINARY RESEARCH

We draw together expertise across a range of disciplines, including:

- architecture
- construction
- organisation and project management
- design
- sustainability
- procurement
- sociology
- economics
- building services
- energy
- environmental engineering.

BUILT ENVIRONMENT



COMPREHENSIVE SUPPORT

Your PhD research will be supported by:

- two academic supervisors as well as independent assessors
- opportunities to present your work through our seminar series and workshops, as well as conferences such as our annual School PhD conference, which is now in its 19th year.

Research activities within the School are grouped into three areas:

- Organisations, people and technology
- Energy and environmental engineering
- Urban living.

Find your supervisor
www.reading.ac.uk/sbe-team
www.reading.ac.uk/architecture/staff

Find out more
www.reading.ac.uk/sbe-phd

Find funding
See page 40

¹ Times Higher Education Institutions Ranked by Subject, 2014, based on its analysis of REF 2014.

² REF 2014 – Architecture, Built Environment and Planning.



Business Informatics, Systems and Accounting (BISA) offers two PhD programmes: PhD in Informatics and Systems Science, and PhD in Accounting and Financial Management.

A GLOBAL LEADER

Benefit from Henley Business School's:

- triple-accredited status from the UK, European and US accrediting bodies (AMBA, EQUIS and AACSB)
- dedicated careers consultants and regular industry networking events
- global alumni network of more than 80,000 graduates across 160 countries.

BUSINESS INFORMATICS, SYSTEMS & ACCOUNTING



TRANSDISCIPLINARY RESEARCH

We reflect the emerging issues of contemporary business: digital transformation, sustainability and ethical business. Research explores new approaches to complex challenges, in order to better understand solutions that allow businesses and organisations to make decisions and operate effectively.

STUDENTSHIPS

A number of full and partial scholarships are offered for full-time PhD students. See page 40 for more details.

Informatics and systems science

Research in this area combines interdisciplinary and collaborative knowledge from a wide range of information-rich domains.

These include: digital firm, applied informatics and semiotics; business, social and health informatics; pervasive and intelligent built environments; perceptual usability; human information management; strategic analysis.

Accounting and financial management

Research in this area bridges the efficient and effective measurement, processing, and allocation of financial information and resource.

This includes: corporate disclosure and information quality; sustainability accounting and reporting; auditing and accountability; international financial reporting; social and institutional context of accounting regulation; rhetorical and argumentative functions of accounting narratives.

Find your supervisor and discover more
www.henley.ac.uk/phd

Find funding
See page 40



Join the Department of Chemistry, where 94% of our research outputs are classed as world leading or internationally excellent.¹

Work with us on our collaborative, interdisciplinary projects and:

- access our purpose-built Chemical Analysis Facility, which provides instrumentation in the areas of NMR, x-ray diffraction, mass spectrometry, thermal analysis, electron microscopy and molecular spectroscopy
- apply for an award – from research councils, industry, and the University – to help support your studies. See page 40 for funding information.

CHEMISTRY



Biomedical, molecular and analytical chemistry

We address challenges in the development of new diagnostic and therapeutic materials for healthcare, including developing novel analytical techniques to identify cancer biomarkers and microbial infections. Emphasis is also on the development of new synthetic methodologies for the synthesis of natural and unnatural products, with applications ranging from peptide construction technology and medicinal compound production by microbial engineering to ligands for nuclear waste remediation. Our research also applies techniques such as spectroelectrochemistry, photochemical methodology, or applications of ultra-high-pressure chemistry.

Soft matter

We conduct research into macromolecular chemistry, physical organic chemistry and surface chemistry, across areas such as hydrogels for use in healthcare, DNA complexes, conducting polymer fibres, healable polymers and nanocomposites, novel high surface area network materials, nanoelectrochemistry and the use of x-ray spectroscopy to probe the mechanisms of reactions. Our experimental studies are supported by computational analysis using quantum mechanics and molecular dynamic simulations.

Find your supervisor
www.reading.ac.uk/chem-team
Find out more
www.reading.ac.uk/chem-phd
Find funding
See page 40

¹ REF 2014 – Chemistry. Combined figure rounded up from 93.2%.



CLASSICS



Join our internationally recognised centre of research excellence for Classics¹, ranked 3rd in the UK for research output².

Our strengths in established approaches to the ancient world are coupled with expertise spanning Egyptian and Anatolian studies, early Islam, ancient linguistics, epigraphy, Roman economics, the reception of antiquity in the modern world, and more.

THRIVING POSTGRADUATE COMMUNITY

As a doctoral student, you'll be firmly embedded in our research community: you can run your own work-in-progress seminars, and participate in our weekly research seminars as well as annual conferences that draw scholars from around the world.

EXCELLENT RESOURCES

The Ure Museum of Greek Archaeology – housed within the Department – includes Egyptian materials, a comprehensive collection of ancient Greek ceramics, and archival material relating to early-twentieth-century excavations.

We also have strong links with the Centre for Hellenic Studies, Department of Archaeology, Graduate Centre for Medieval Studies, Centre for Economic History, British School at Athens, and British School at Rome.

RESEARCH AREAS

Our core areas of expertise include ancient history, Greek and Latin language and linguistics, literature, archaeology, philosophy, art and culture. Within these areas, we have particular strengths in:

- Ancient languages – Latin and Greek of all periods, Middle Egyptian, Coptic, Luwian – and ancient linguistics
- Ancient political thought, including Plato – we are a founder member of the Legacy of Greek Political Thought network
- Early Christian literature
- Egypt from the Bronze Age to early Islam
- Greek art and archaeology
- Greek literature from the Archaic period to the Roman Empire – especially Archaic poetry, tragedy, comedy, historiography, biography, and Plutarch
- Latin language and literature
- Papyrology, textual criticism, fragmentary texts and epigraphy
- Religions of Greece, Rome and other parts of the ancient Mediterranean
- The reception of antiquity
- Roman history and archaeology – particularly economic history and maritime trade.

Find your supervisor
www.reading.ac.uk/classics-team
Find out more
www.reading.ac.uk/classics-phd
Find funding
See page 40

¹ 86% of our research overall and 100% of our research impact was rated world leading or internationally excellent in the REF 2014 – Classics.
² Times Higher Education Institutions Ranked by Subject, 2014, based on its analysis of the REF 2014.



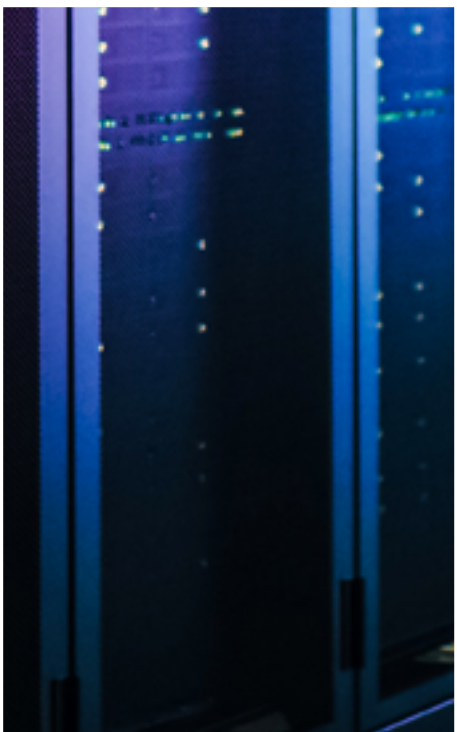
Undertake your PhD study in the centre of a major high-technology hub.¹

Our research expertise includes:

- data science
- machine learning
- computer vision
- big data analytics
- computational biometrics and security
- cloud computing
- high-performance computing for environmental sciences.

Research is supported by a virtual infrastructure, a computer cluster dedicated to big data research, and high-end graphics processing unit (GPU) facilities. If you choose to focus on computer science problems in environmental sciences, you'll have access to the national JASMIN data-intensive supercomputer facility.

COMPUTER SCIENCE



Your PhD studies within the Department of Computer Science will fall into one of the three research groups:

Advanced computing for environmental sciences

We work closely with colleagues in our meteorology and mathematics departments on programmability of environmental simulation, data systems for petascale data, cloud computing, machine learning, high-performance and future computing.

Data science and artificial intelligence

We research knowledge discovery and representation techniques and algorithms for large amounts of data. Research activities are also targeted at applications in the life sciences, neuroscience, climate science, industrial and business sectors:

- data mining algorithms
- predictive analytics: data integration, processing, analysis, exploration and visualisation of high-dimensional data
- big data: parallel and distributed computing, cloud computing, extreme-scale data mining
- data mining applications in chemoinformatics, bioinformatics, computer networks and peer-to-peer (P2P) systems
- knowledge engineering and business intelligence.

Computational vision

We research the computational issues of perception and reasoning in relation to image interpretation, including automated CCTV analysis for safety, security and threat assessment, biometrics, and environmental monitoring.

Find your supervisor
www.reading.ac.uk/comp-sci-team
Find out more
www.reading.ac.uk/comp-sci-phd
Find funding
See page 40

¹ Reading is at the centre of the Thames Valley on the M4 corridor with company headquarters such as Microsoft, Oracle, Cisco Systems, Hewlett-Packard (HP) and Intel all within a few miles of our main campus.



CYBERNETICS

Undertake your PhD in Cybernetics at Reading, and take a transdisciplinary approach to the study of interactive systems, their behaviours, structures, information flows and control.

You'll be based in the School of Biological Sciences, and benefit from our strong links with the Centre for Integrative Neuroscience and Neurodynamics, the School of Chemistry, Food and Pharmacy, and School of Psychology and Clinical Language Sciences.

FACILITIES AND RESOURCES

You'll have access to our:

- electrophysiology laboratory
- range of virtual reality and haptic interfaces
- optically pumped far-infrared laser
- terahertz spectrometer
- Brain Embodiment Laboratory, a facility that enables research at the interface of engineering, neuroscience and cognition (including culturing of biological neurons and brain-computer interfaces).

Systems neuroscience

We investigate neural networks and consider functional responses that range from individual neural activity to high-level cognition. Our academics have carried out pioneering research into brain-computer interfaces, neural implant technology, and 'animats' (robots controlled by cultures of living neuronal cells).

Measurement and control

Our research explores the state and behaviour of systems and our influence on them over time. For example, we use terahertz spectroscopy to probe and reveal fundamental biological processes, with potential applications in aiding pharmaceutical development and medical diagnostics. We are also leading projects where control techniques are being developed for using functional electrical stimulation to improve the maintenance of bone health in patients with spinal cord injuries.

Human-machine interaction

Research includes designing interfaces that are intuitive, adaptable and natural. Our research into haptic interfaces studies how we can emulate touch in virtual environments. We also have expertise in the design of technologies to support older adults and people with disabilities, and are involved in a range of interdisciplinary projects relating to health, rehabilitation and wellbeing.

Find your supervisor

www.reading.ac.uk/sbs-team

Find out more

www.reading.ac.uk/sbs-phd

Find funding

See page 40



Join Reading's early modernists who offer research expertise across diverse aspects of early modern literature and history.

The strength of early modern studies at Reading lies in the Early Modern Research Centre, a well-established partnership of colleagues from the Departments of English, History, and Politics. This interdisciplinary centre also runs regular conferences, seminars, workshops and colloquia.

RESEARCH LINKS

We have strong links with the Berkshire Record Office and the Archives of St George's Chapel, Windsor. Reading is also ideally situated for access to the British Library in London, the Bodleian Library in Oxford, and the National Archives at Kew.

Early modern English literature

Research strengths include:

- the history of the book
- manuscript studies
- early modern drama
- Reformation literature
- women's writing
- cross-cultural encounters, especially in relation to Anglo-Spanish studies and early modern Islam.

EARLY MODERN STUDIES



SPECIAL COLLECTIONS

The University of Reading Library houses a wealth of early modern material and a rich variety of early printed books.

- The Stenton Collection is strong in works on local history, law and women's studies.
- The Overstone Library contains volumes dating from the seventeenth and eighteenth centuries.
- The Cole Library is dedicated to early medical and natural history.
- The Abingdon, Buckland, Didcot and Henley parish libraries are key resources for the study of early modern church history.

Early modern history

Research strengths span the discipline – social, religious and political history – including the history of the Atlantic world; history of art, medicine and science; and British and European history.

Early modern politics

Research strengths include the history of political thought; the history of rights-based politics; Thomas Hobbes; and radical and republican thought.

Find your supervisor

www.reading.ac.uk/emrc-team

Find out more

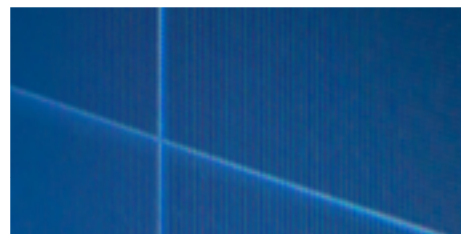
www.reading.ac.uk/emrc-phd

Find funding

See page 40



ECONOMICS



Carry out applied or theoretical economic research that aims to improve quality of life in the UK and around the world.

Join our Economic and Social Research Council (ESRC)-recognised PhD programme and develop a critical understanding of core fields within economics, while focusing on your chosen area of specialisation. You will join at least one of our active research clusters:

- behavioural economics
- development economics
- sports economics
- business economics and finance
- labour and household economics.

You'll have plenty of opportunities to apply the latest research tools to current economic problems and issues, and to communicate your work to fellow researchers – for example, through presenting a seminar, speaking and networking at conferences and workshops, and visiting or hosting researchers from elsewhere.

LINKS WITH INDUSTRY

You can also benefit from our work and research projects with multinational organisations, governments and international agencies, including the United Nations, HM Treasury, the International Monetary Fund (IMF), and the World Bank.

RESEARCH CENTRES

The Centre for Institutions and Economic History

This research centre examines issues at the interface of economics, politics, sociology and history.

The Economic Analysis Research Group

We analyse core areas of macroeconomics, microeconomics and econometrics, with an emphasis on the practical application of theoretical concepts.

Find your supervisor
www.reading.ac.uk/econ-team

Find out more
www.reading.ac.uk/econ-phd

Find funding
See page 40

EDUCATION



Join one of the top 20 research-intensive universities in the UK.¹

In the most recent national assessment, we were rated in the top quartile of education departments in the UK for research overall, and in the top 10 for research outputs.²

You'll have access to dedicated study spaces, subject-specific research training, and events such as our annual Doctoral Research Conference.

We offer PhD and MPhil programmes, as well as a Doctorate in Education (EdD). The EdD is a part-time programme offering high-quality research training and career development for professionals employed in education.

Language and Literacy in Education Research Group

Areas of research include:

- first and second language development and pedagogy
- monolingualism
- bilingualism and multilingualism.

Improving Equity and Inclusion through Education Research Group

Areas of research include:

- education and social mobility
- young people's educational choices
- special educational needs, inclusion and social justice
- the role of parents, class, ethnicity and gender in educational engagement
- outdoor play and provision
- engagement, attainment and educational leadership and management.

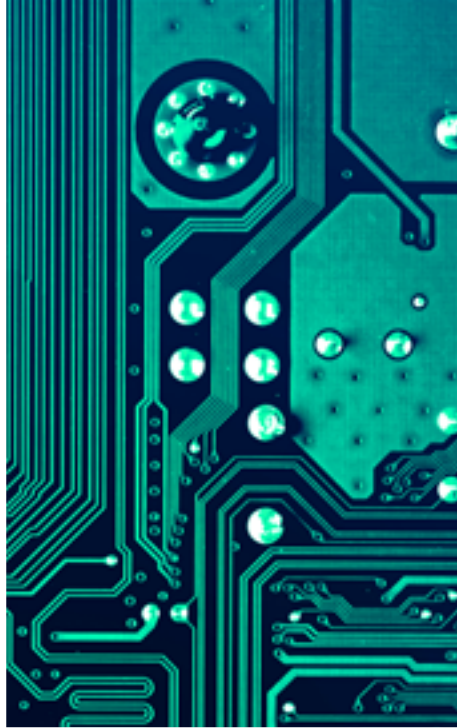
Find your supervisor
www.reading.ac.uk/edu-team

Find out more
www.reading.ac.uk/edu-phd

Find funding
See page 40

¹ Times Higher Education Research Intensity Ranking, 2014, based on its analysis of REF 2014.

² Times Higher Education Institutions Ranked by Subject, 2014, based on its analysis of REF 2014.



Explore key challenges in biomedical engineering, healthcare technologies, and human-machine interaction.

As a PhD student in Electronic Engineering, you'll join our Biomedical Sciences and Biomedical Engineering Research Division, where research explores topics such as:

- the design of novel technologies to sense data from the body
- control systems for motor rehabilitation
- design stability in haptic interfaces.

You'll have access to interdisciplinary training as well as clinical and healthcare expertise.

Human-machine interaction

Research includes:

- design stability and control of haptic interfaces
- design of robotic systems with applications in motor rehabilitation
- sensors to enable new ways of interacting with technology.

Instrumentation

Research includes:

- terahertz technologies including research into new instrumentation, measurement technologies and signal processing algorithms for applications in disease diagnoses and medical imaging
- new methods for interpreting biomedical measurements, drawing on aspects of control theory, system identification and port-Hamiltonian analysis of physical systems.

Find your supervisor
www.reading.ac.uk/sbs-team

Find out more
www.reading.ac.uk/sbs-phd

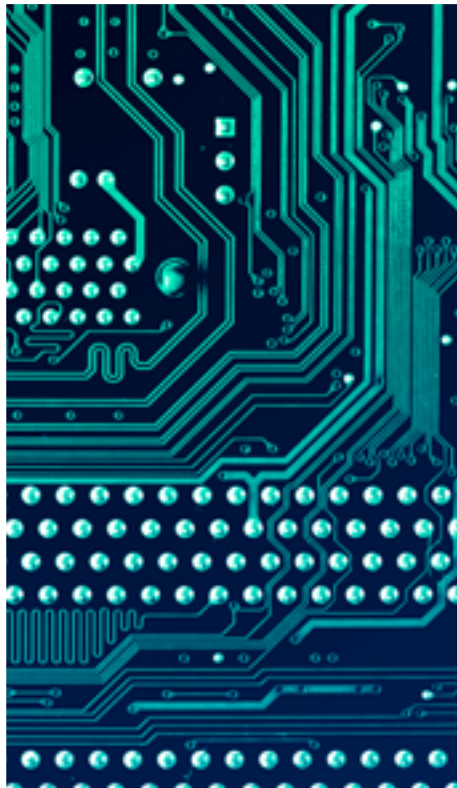
Find funding
See page 40

Sensors

Research includes:

- designing novel sensors with biomedical applications through research in low-power wearables
- remote sensing of data from humans
- wireless sensor networks
- consumer electronics
- embedded systems
- energy harvesting
- Internet of Things communication technologies.

ELECTRONIC ENGINEERING



Join our Department of English Language and Applied Linguistics where you'll be integrated into a research-intensive unit.

- We're ranked in the top 150 universities in the world for both English Language and Literature, and Linguistics.¹
- 98% of our research overall has been rated world leading, internationally excellent or internationally recognised.²

Language analysis, acquisition and bi/multilingualism

Research spans grammar, vocabulary, lexicon, phonetic systems, child bilingualism, cognitive linguistics, psycholinguistics and working memory across a range of languages.

Sociolinguistics, digital media, corpus analysis

Research in this area includes language and social media, cross-cultural communication, translanguaging and social identity, corpus analysis of formulaic language, code-switching, sociolinguistic variation, discourse analysis of power and gender, and World Englishes.

ENGLISH LANGUAGE AND APPLIED LINGUISTICS



Our PhD programmes include:

- PhD in Applied Linguistics: suitable if you already have a good grounding in research methods
- PhD in Applied Linguistics (Taught-Track and Thesis): suitable if you would benefit from a great taught component.

Both include research and applied linguistics modules in the first year, and culminate in a 90,000-word thesis at the end of three to four years. Part-time arrangements are also available.

Language teaching and assessment

Research includes language testing and assessment, teacher development, English language curriculum design, internationalisation within higher education institutions, academic literacies and language pedagogies, academic writing, student transitions through college stages, communicative language teaching, task-based learning, and speech fluency.

Find your supervisor
www.reading.ac.uk/elal-team
Find out more
www.reading.ac.uk/elal-phd
Find funding
See page 40

¹ QS World University Rankings by Subject, 2020.

² REF 2014 – Modern Languages and Linguistics.



Supervision is available in a wide variety of fields when you join our dynamic research environment.

- 25% of our research outputs have been considered world leading, and a further 51% of our research outputs were judged to be internationally excellent.¹
- We are ranked in the top 150 universities in the world for English Language & Literature.²

Our Library has excellent holdings – papers and manuscripts of several twentieth-century poets, a large collection of historical children’s books, and an impressive rare book collection – and you can access our dedicated training programme to work with archives and collections. Major research resources, such as the British Library in London and the Bodleian in Oxford, are within easy reach.

We offer reading groups, a seminar series and teaching opportunities.

ENGLISH LITERATURE



American literature

Research includes diaspora and ethnicities, imperialism, and transatlanticism.

Beckett studies

The Beckett International Foundation explores the Beckett Archive of manuscripts, letters, memoranda and book materials, recognised by the Museums, Libraries and Archives Council as a “pre-eminent collection of national and international significance”.

Book history

Researchers work closely with the Archive of British Publishing and Printing, which includes records of literary publishers such as Chatto & Windus and the Hogarth Press.

Children’s literature

The Graduate Centre for International Research in Childhood is globally unique for multidisciplinary research into theoretical and critical approaches to children’s literature and childhood, including disability, media and identity studies.

Early modern studies

The Early Modern Research Centre explores cultures of print, manuscript and performance, Reformation studies, and the history of political thought.

Medieval studies

The Graduate Centre for Medieval Studies spans history, archaeology, and medieval languages and literatures.

Nineteenth-century literature

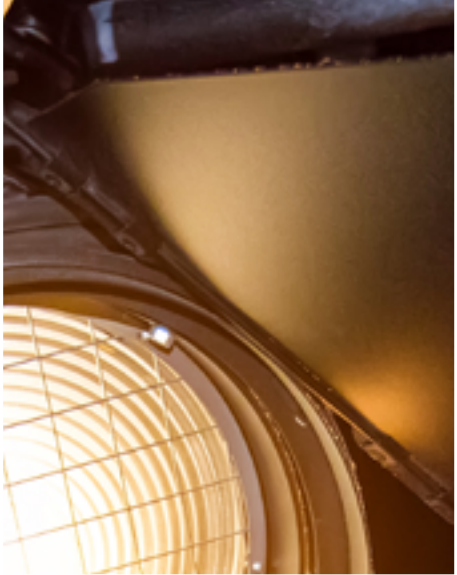
Strengths include intersections between science, medicine and literature, and Oscar Wilde.

Twentieth-century and contemporary literature

We specialise in modernism, postcolonialism, poetry, drama and creative writing.

Find your supervisor
www.reading.ac.uk/eng-lit-team
Find out more
www.reading.ac.uk/eng-lit-phd
Find funding
See page 40

¹ REF 2014 – English Language and Literature. Figures rounded up, 24.6% ranked world leading and 50.8% ranked internationally excellent.
² QS World University Rankings by Subject, 2020.

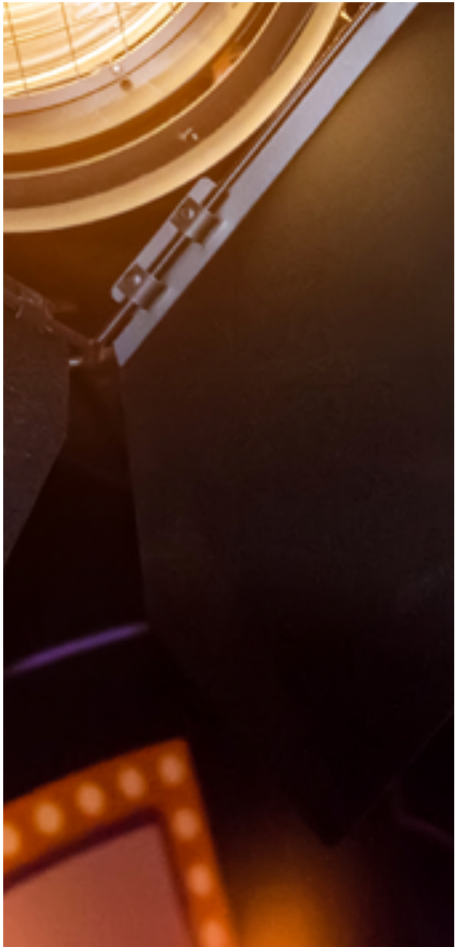


Receive specialist supervision in the areas of film, theatre and television, from academics who pioneer practice as research.

You’ll join a department with a lively and interdisciplinary research culture. Our shared vision means that we work collaboratively with each other, fellow researchers in the UK and abroad, and creative practitioners. We have been consistently successful in winning external funding for our research.

Our research focuses particularly on stage and screen performance and production in the twentieth and twenty-first centuries.

FILM, THEATRE & TELEVISION



PROFESSIONAL STUDIOS

Your research will be supported by access to our modern, professional-quality spaces. These include three flexible theatre spaces, a multi-camera film and TV studio, a digital cinema, and a dedicated recording studio and mixing suite.

INDUSTRY CONNECTIONS

Our staff edit leading academic journals and book series, and serve on assessment panels of national research funding councils. We host conferences, performances and symposia throughout the year, bringing together academics, creative practitioners and postgraduate students.

We also run the Centre for Film Aesthetics and Cultures, which hosts a range of events including film screenings, book launches and exclusive masterclasses with industry professionals.

Academic staff specialise in the following areas:

Film

- Analysis and histories of cinema, including mise-en-scène, alternative cinema and artists’ film
- New digital and 3D forms
- Film cultures and film style
- Realism and world cinema
- Cinema and intermediality
- Landscape in film
- Ecocriticism

Theatre

- Beckett’s drama for stage and screen
- Twentieth- and twenty-first-century performance
- Political theatre, gender and performance
- Theatre companies, directors and working practices
- Diasporic performance
- Multimedia and interdisciplinary practice-as-research

Television

- British and US drama and documentary
- Contemporary, popular and youth television
- Transnational television and film
- New media

Find your supervisor
www.reading.ac.uk/ftt-team
Find out more
www.reading.ac.uk/ftt-phd
Find funding
See page 40



FINANCE

The ICMA Centre, part of the triple-accredited Henley Business School (AMBA, EQUIS and AACSB), undertakes research and consultancy projects on a variety of topics in financial markets.

Study alongside influential, widely cited academics at the forefront of their subject specialisms, and former financial market practitioners. We publish in established journals, are members of key editorial boards, serve as advisers, and act as evaluators of research.

INDUSTRY INSIGHT AND SKILLS DEVELOPMENT

Our strong connections with many financial firms allow you to gain access to industry data and market knowledge. As part of the programme, you will also be offered advanced finance, econometrics and generic skills training.

CAREERS

Our PhD graduates have secured academic positions at UK universities such as Oxford, Manchester, Kings College London, Cardiff, Bath, Sussex, Surrey and East Anglia, as well as universities abroad, including ESCP Europe, Hamburg, University College Dublin and Goethe University Frankfurt. Others have joined companies including Allianz, Barclays, Credit Suisse, Deloitte, Deutsche Bank, NAFMII, Oxford Risk and Sociovestix Labs.

STUDENTSHIPS

Several PhD studentships are offered every year. See page 40 for details.

RESEARCH AREAS

We have an active PhD programme focusing on various areas of finance:

- Asset pricing
- Behavioural finance and socially responsible investing
- Corporate finance and governance
- Financial risk management
- Historical finance
- Market microstructure and financial regulation
- Pension schemes
- Portfolio management and investment
- Quantitative finance and financial econometrics
- Shipping finance
- Sport finance.

A more detailed and regularly updated list of relevant topics with available supervisors can be found on the ICMA Centre website.

Before applying for the programme, you should have a clear understanding of your intended research topic, as a mandatory part of the application is a detailed research proposal.

Find your supervisor
www.henley.ac.uk/phd

Find out more
www.icmacentre.ac.uk

Find funding
See page 40



FOOD AND NUTRITIONAL SCIENCES

The University of Reading is ranked 5th in the UK for research impact in Agriculture, Veterinary and Food Science¹, placing us among the top departments in the country.

We have the UK's largest team of scientists and technologists dedicated to researching all aspects of food and nutrition, combining international expertise in human nutrition, microbial sciences, and food bioprocessing.

SPECIALIST FACILITIES

We have one of the largest ranges of dedicated food laboratories in a UK university. These include a recently refurbished pilot plant for product development, advanced taste panel facilities, and specialist laboratories for assessing human gut microbiota.

Food Research Group

Research covers fundamental science and engineering studies concerned with laboratory separation science, enzymatic processing, sensory and flavour science, macromolecular interactions, food processing for health outcomes, pilot plant manufacturing, and downstream processing.

Food Microbial Sciences Unit

We cover all areas of food microbial research, including emerging technologies of food preservation and microbial food safety. These are underpinned by modern metabolic and molecular biological principles, including metagenomics, gut modelling, and human volunteer studies.

FoodBioSystems DTP

We lead a BBSRC DTP, funding 25-30 PhDs a year for five years across six partner universities: research.reading.ac.uk/foodbiosystems.



GLOBAL OUTLOOK

Our students and researchers come from across the globe. Many return to enhance their country's food security or nutritional health status after their studies. You could enter a variety of areas within the food industry, including food consultancy and safety agencies, government food departments, consumer organisations and academic research.

Hugh Sinclair Unit of Human Nutrition (HSUHN)

The HSUHN explores the impact of food and individual dietary components, especially lipids, phytochemicals and probiotics, on human health and risk of chronic diseases, including cardiovascular disease, Type 2 diabetes, cognitive decline and cancer.

DAGriFood in Sustainable Food Quality for Health (part time)

Develop your professional role by implementing independent, relevant research within your workplace, and gain a doctorate level award that is distinct from a traditional PhD.

Find your supervisor
www.reading.ac.uk/fns-team

Find out more
www.reading.ac.uk/fns-phd

Find funding
See page 40

¹ Times Higher Education Institutions Ranked by Subject, 2014, based on its analysis of the REF 2014.



GEOGRAPHY AND ENVIRONMENTAL SCIENCE



The University of Reading is ranked 4th in the UK for research power in Earth Systems and Environmental Sciences.¹

Our research spans a broad range of topics at the interface between humans and the environment. We collaborate extensively with researchers in other disciplines, and our large cohort of doctoral students – working in human geography, physical geography, environmental science and soil science – benefit from working in such a multidisciplinary environment.

You'll receive academic supervision to guide and support your research, within a thriving research community that allows you to focus on developing your life and work skills alongside academic success.

Geographies of justice, care and responsibility

We focus on inequalities, participatory approaches, politics and governance in diverse fields. These include environmental change, food networks, gender and caring relations, and citizen science at local-global spatial scales.

Global development, environment and sustainability

We critically examine global flows of ideas and resources looking at the interactions between poverty, population, livelihood development, governance and sustainability of natural resources.

Past climate and environmental change

We use a range of palaeo-data and modelling approaches to understand past human-environment-climate relationships at regional to global scales, over millennial to glacial-interglacial time frames.

Environmental science

We conduct in-depth and cross-disciplinary environmental science to address global challenges. We have a strong focus on soil, water and air, all in relation to ecosystem services, sustainable production and natural hazards, and we work at scales ranging from molecular to Earth system. Our research combines laboratory and field experimentation, field monitoring and modelling. Particular research focuses are:

- bio-geochemistry, pollution and soil science
- hydrometeorology and hydrology, including water quantity, and global-scale forecasting
- natural hazards (such as floods, droughts, heatwaves, fires, and landslides)
- remote sensing, and land surface process and ocean bio-geochemical modelling.

Find your supervisor

www.reading.ac.uk/ges-team

Find out more

www.reading.ac.uk/ges-phd

Find funding

See page 40

¹ Research Fortnight's Analysis Power Rankings, 2014, based on its analysis of REF 2014.



HISTORY



Join a vibrant community, with a stimulating research environment for PhD students.

The diversity of our research expertise – across a long chronological timeframe, from medieval times to the present day – enables us to offer supervision on a wide range of topics.

Our academics are all active researchers, and we have a strong track record in hosting funded research projects and participating in major research networks. Close ties with other departments across the University – including Politics, Modern Languages, and English – mean that many of our doctoral students receive co-supervision.

LEARNING ENVIRONMENT

You'll have many opportunities to embed yourself in the intellectual life of the Department. These include our seminar series, annual Stenton Lecture, and chances to present your work and network with other researchers.

Your studies will be supported by excellent resources and facilities. As well as a dedicated doctoral research room, you'll be within easy reach of the Berkshire Record Office, the BBC archives, the Museum of English Rural Life, and London and Oxford, with their wealth of archival materials and seminars.

RESEARCH AREAS

Our research has a global reach, with expertise in American, African, Middle Eastern, and South Asian history, as well as British and European. Our core research strengths include political, cultural, social, gender and transnational history, the history of ideas and beliefs, and the history of science and health.

Medieval history

The Graduate Centre for Medieval Studies (GCMS) serves as a social and intellectual meeting point for all medievalists in the University. It runs an annual seminar series and conference, and publishes the interdisciplinary journal, *Reading Medieval Studies*.

Early modern history

The Early Modern Research Centre (EMRC) brings together staff and students for discussion via its interdisciplinary seminar series.

Modern history

Our modern historians have a diverse range of research interests and are active in a wide variety of national and international scholarly bodies and research networks.

Find your supervisor

www.reading.ac.uk/hist-team

Find out more

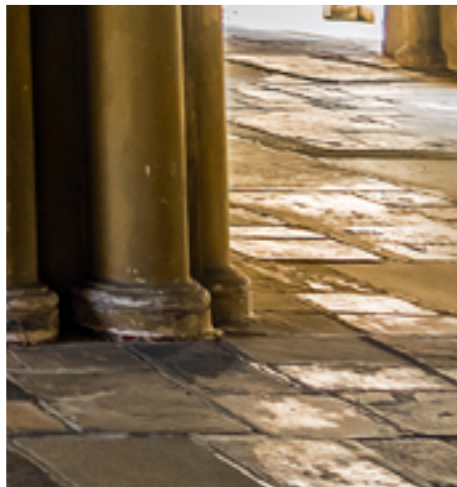
www.reading.ac.uk/hist-phd

Find funding

See page 40



LAW



The School of Law at the University of Reading is ranked 10th in the UK for research intensity.¹

We are proud of our vibrant research culture which welcomes high-quality applicants from all over the world. All of our research is judged to be world leading, internationally excellent or internationally recognised.²

As a member of our research community, you'll benefit from:

- dedicated resources and facilities
- personal supervision from established scholars
- academic and pastoral support
- subject-specific and core social science research training.³

In addition, a range of academic and social events will be available to you throughout the year, including research seminars, informal lunches, and career development opportunities.

RESEARCH AREAS

Reflecting the breadth of our academic expertise, we offer PhD supervision – spanning both doctrinal and socio-legal work – across a number of research groups.

Centre for Commercial Law and Financial Regulation (CCLFR)

Established in partnership with the International Capital Market Association Centre, the CCLFR conducts world-leading research in commercial law, competition law, intellectual property law, banking and finance law, the regulation of network industries, corporate law, and legal issues related to energy (oil and gas).

Global Law at Reading (GLAR)

GLAR is Reading's research hub for public international law, EU law and human rights law. We have an international reputation for research excellence in these areas, as well as a thriving postgraduate research community. GLAR has a major seminar series, the Gandhi Research Seminar Series, which attracts internationally renowned speakers from around the world and releases a regular, free podcast.

Law, Justice and Society

A diverse and inclusive group of scholars address a multitude of aspects of interactions between law, justice and society, through the lens of a broad range of methodological and conceptual approaches. They adopt doctrinal, socio-legal, empirical, historical and theoretical approaches to their chosen subjects, forming the focal point for a number of cross-cutting clusters of research expertise in relation to: justice, rights and legal theory; legal history; property, transactions and markets; public policy; and family, gender and sexuality.

Find your supervisor

www.reading.ac.uk/law-team

Find out more

www.reading.ac.uk/law-phd

Find funding

See page 40

¹ Times Higher Education Subject Ranking on Intensity, 2014, based on its analysis of REF 2014 – Law.

² REF 2014 – Law.

³ Training is offered both within the School of Law and the University's Graduate School.



MANAGEMENT



Undertake your PhD at Henley Business School, where we attract influential academics and practitioners who are widely published and proud to share their wealth of professional knowledge with you.

Doctor of Business Administration (DBA)

Apply sound theory and rigorous research to real and complex issues in business and management. This part-time professional doctoral degree is designed to enhance your executive and professional practice.

International business and strategy

For the past 50 years, our work has helped define the research agenda in the field, as well as in business history and international human resource management. It is driven through centres, such as the John H Dunning Centre for International Business and the Centre for International Business History.

Marketing and reputation

Research is undertaken through the John Madejski Centre for Reputation, the Henley Centre for Customer Management, the Governance research group, and the Digital Marketing, Consumers and Society research group. We welcome applicants in all areas, but particularly in:

- **B2B and B2C marketing:** customer experience; digital marketing; mobile commerce; service recovery; innovation and creativity; segmentation; and brand strategy, critical marketing, and consumer culture theory (CCT).

- **Reputation:** corporate responsibility and wellbeing in/around organisations; individual and organisational resilience; emotional and cognitive influences on leadership behaviour; the impact of the reputation of leaders and leadership teams; unintended consequences and decision-making; nature of, and working through, ethical dilemmas; and governance and reputation enhancement.
- **Governance:** improving the performance of top executives, top executive teams and boards; excellence in consultancy practice; leadership; corporate governance; conflict resolution; and international relations.

Leadership, organisations and behaviour

Research in this area is conducted through the Henley Centre for Entrepreneurship, the Centre for Social and Organisational Studies, the Centre for Euro-Asian Studies, the Henley Forum for Organisational Learning and Knowledge Strategies, and the Henley Centre for Leadership. It spans: critical management studies; entrepreneurship; leadership, development and coaching; ethics; gender in SMEs; cultural and creative sectors; innovation management; hydrocarbon development; knowledge generation and application; psychological contracts and commitment strategy as practice; HRM practices; identity at work; organisational energy, change and structure; and stress at work.

STUDENTSHIPS

A number of full and partial scholarships are available for full-time PhD students.

Find your supervisor and discover more

www.henley.ac.uk/phd

Find out more about the DBA

www.henley.ac.uk/dba

Find funding

See page 40



MATHEMATICS AND STATISTICS



We have an outstanding reputation for research quality – 86% of our research overall in Mathematical Sciences is recognised as world leading or internationally excellent.¹

Our research areas overlap and interact significantly. They include:

Applied statistics

Methodological developments for medical statistics, statistical genetics, Bayesian computation, and statistics of extremes.

Complex fluids and theoretical polymer physics

Multiscale mathematical, statistical and computational modelling of structural, dynamic, rheological, and surface properties of simple and complex fluids, and advanced materials.

Data assimilation and inverse problems

Estimating the state of systems in meteorology, atmospheric chemistry, oceanography, land surface physics, coastal sediment transport, and space.

Geophysical fluid dynamics

Investigation of the large-scale motions of fluids on the Earth and on other planets, requiring a careful blend of theory, numerical simulations and data analysis.

Mathematical biology

Using mathematical modelling to provide insight into a range of biological, biomedical, clinical and pharmacological application areas.

Number theory

Study of the properties of the integers and their building blocks – prime numbers – using tools from algebra, analysis and geometry.

Numerical analysis and computational modelling

Analysis and application of finite and boundary element methods and problems arising in fluid dynamics, acoustics and electromagnetics.

Probability and stochastic analysis

Finite and infinite dimensional stochastic dynamical systems: ergodic theory; extreme events; nonlinear filtering and series analysis; many-particle systems; mathematics of planet Earth.

Pure and applied analysis

Complex analysis; linear wave equations; nonlinear PDE and calculus of variations; operator theory; and spectral theory.

Mathematics of Planet Earth

Development and use of advanced mathematical and computational techniques to analyse risk and uncertainty for extreme weather and climate change.

Find your supervisor
www.reading.ac.uk/maths-team
 Find out more
www.reading.ac.uk/maths-phd
 Find funding
 See page 40

¹ REF 2014 – Mathematical Sciences.



We are one of the oldest centres of medieval studies in the UK and explore challenging topics that bring together social, cultural and economic history, using both textual and material evidence.

LEARNING ENVIRONMENT

The Graduate Centre for Medieval Studies (GCMS) comprises of academic staff and postgraduates from all fields of medieval studies at Reading. With an extensive range of affiliates and alumni at universities and research centres in the UK and beyond, the Centre also provides access to a wide network of medievalists.

INTERDISCIPLINARY APPROACH

This distinctive programme enables you to work on one particular research subject area, or bring together any two of the subject areas covered by medievalists at Reading. These subject areas are:

- Archaeology
- Art history
- Business studies
- Classical studies
- Economics
- English
- History
- Modern languages.

MEDIEVAL STUDIES



As a full member of the GCMS, you will have access to an array of opportunities. For example, our PhD students have:

- organised an annual international postgraduate conference
- taught in departments that are affiliated with the Centre
- contributed to panels at national and international conferences
- submitted articles to the Centre's annual Journal, *Reading Medieval Studies*.

Find your supervisor
www.reading.ac.uk/medieval-team
 Find out more
www.reading.ac.uk/medieval-phd
 Find funding
 See page 40



METEOROLOGY

The University of Reading is ranked 2nd in the world for research in Meteorology and Atmospheric Sciences.¹

We are renowned for pioneering research on the fundamental dynamics and physics of weather and climate. Our work is reinforced by scientific and mathematical underpinning.

We hold a highly prestigious Regius Professorship, bestowed by the Queen in recognition of the exceptionally high quality of our teaching and research. We attract the best students from science degrees, and both BSc and master's students can apply.

PHD PROJECTS

We offer projects in the full range of atmospheric, oceanic and climate science as well as research into space weather and solar terrestrial physics. Collaborative projects with other departments and external partners are common, touching on a wide variety of applications, such as hydrology, agriculture and applied mathematics.

LEARNING ENVIRONMENT

Participate in seminars and research groups, undertake experiments, and engage in weather and climate discussions. Recent PhD students have assisted teaching as paid demonstrators and attended a summer school and an international conference. You'll be based in an office shared with other PhD students.

Our building houses the MetOffice@Reading unit. We have close research and training links with the Met Office and the European Centre for Medium-Range Weather Forecasts, and are one of only six departments that are nationally involved with the Met Office Academic Partnership.

Our research covers three overlapping themes:

Weather

Research areas include: mesoscale and large-scale dynamical processes; turbulence and urban meteorology; cloud physics; meteorological research for aviation and energy applications; and connective storms.

Climate

Research areas include: climate variability and change; radiative transfer; aerosol-climate interactions; oceanography; atmospheric electricity; tropical climate; land-surface processes; and stratospheric dynamics.

Earth observation and space

Research areas include: high-resolution atmospheric data assimilation; data assimilation theory; space weather; land-surface remote sensing; cloud and precipitation remote sensing; and remote sensing and modelling of volcanoes.

STUDENTSHIPS

Studentships are available to suitable UK candidates with good honours degrees in mathematics, physics, environmental science or closely related subjects.

Find your supervisor
www.reading.ac.uk/met-team

Find out more
www.reading.ac.uk/met-phd

Find funding
See page 40

¹ Latest Center for World University Rankings by Subject, 2017.

MODERN LANGUAGES



Study within a department that undertakes world-leading research.¹

Our experts teach across four distinct areas, combining language study with history, politics, literature, linguistics, film and culture. You'll join a friendly, collaborative community – we've been commended for the effective integration of PhD students into our research environment – and you'll have many opportunities to network with other researchers, within the University and internationally.

RESEARCH EXCELLENCE

- 98% of our research overall on Modern Languages and Linguistics was rated as world leading, internationally excellent or internationally recognised¹
- 4th in the UK for research impact²
- 5th in the UK for research intensity³.

German studies

- Translation and modernism
- Eighteenth- and nineteenth-century German language, literature and culture
- Political and media discourse and critical discourse analysis
- Public language debates.

Our Centre for East German Studies offers unique resources, including an extensive collection of German feature films.

French studies

- Modern Francophone literature and cinema
- Children's and women's literature in French
- Francophone (Indian Ocean) literature
- Twentieth-century philosophical writing in French.

Italian studies

- Italian migration
- History of Italian language and sociolinguistics
- Modern Italian literature and culture
- Publishing history and translation
- Italian cinema.

We lead the postgraduate training programme in Italian studies, a regional consortium comprising University College London (UCL), Royal Holloway, University of London (RHUL), Oxford, and Cambridge.

Spanish and Latin American studies

- Modern and contemporary Hispanic literature
- Spanish and Latin American popular culture
- Literary and print culture in Spain and Latin America
- Colombian and Argentine history and culture
- Realism in Spanish literature.

We carry out interdisciplinary research, and are fully integrated in a fast-growing international research network.

Find your supervisor
www.reading.ac.uk/mod-lang-team

Find out more
www.reading.ac.uk/mod-lang-phd

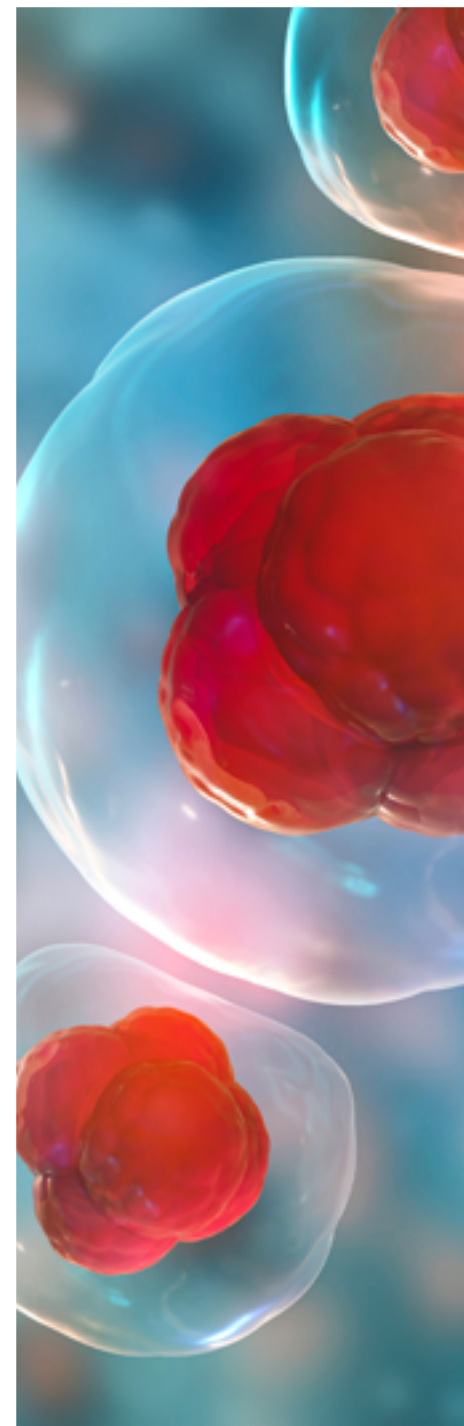
Find funding
See page 40

¹ REF 2014 – Modern Languages and Linguistics. 27% of our research has been ranked world leading.

² Times Higher Education Institutions Ranked by Subject, 2014, based on its analysis of REF 2014.

³ Times Higher Education Subject Ranking by Intensity, 2014, based on its analysis of REF 2014.

PHARMACY



At Reading School of Pharmacy, we conduct internationally competitive research across these areas: pharmaceuticals, pharmaceutical chemistry, physiology and pharmacology, pharmacy practice and pharmacy.

We have been ranked in the upper quartile by research outputs¹, and 85% of our research outputs were recognised as internationally excellent or world leading².

You'll join a School with an excellent track record of collaborating with industrial and end users of our technologies.

SPECIALIST FACILITIES

We offer purpose-built environments for research across the life and physical sciences, including the Chemical Analysis Facility, interdisciplinary life sciences research buildings, and Brain Embodiment Laboratory.

Physiological processes and targets

We investigate fundamental physiological processes to identify novel therapeutic targets, and have internationally recognised researchers across several fields, including cardiovascular disease, vascular dementia, Alzheimer's disease, regenerative medicine and stem cell biology, neuropathic pain and inflammatory diseases.

Therapeutic applications

We develop novel polymer-focused drug delivery systems and intelligent scaffolds for cell-based therapies, as well as topical hydrogels and patches, anticancer polymer-drug conjugates, and polymers that enhance dissolution of poorly water-soluble drugs.

Treating disease

We aim to use our understanding of the molecular basis of diseases to improve treatment and diagnosis, exemplified by research into DNA structure and binding, synthesis of carbohydrate therapeutics and antimicrobial agents, solid-state characterisation of drug molecules, rapid diagnosis of common diseases, and novel drug delivery to the skin, eye and lungs.

Translational research

Our research is at the forefront of stem cell biology, molecular and cellular neuroscience, and polymer science to develop new cellular models of disease and diagnostics. We develop biomaterials for wound care and stem cell therapy, and our research into non-psychoactive plant cannabinoids has contributed to an approved treatment for drug-resistant epilepsy.

Safer medicines, better practitioners

Our research aims to improve the work of pharmacists and other healthcare workers. We incorporate the co-design of health interventions, the study of medication safety and methodology that examines illness beliefs, maladaptive behaviours, and the language of pharmacy.

Find your supervisor

www.reading.ac.uk/pharm-team

Find out more

www.reading.ac.uk/pharm-phd

Find funding

See page 40

¹ Times Higher Education Institutions Ranked by Subject, 2014, based on its analysis of REF 2014.

² REF 2014 – Allied Health Professions, Dentistry, Nursing and Pharmacy.



PHILOSOPHY



The Department of Philosophy takes pride in its large and thriving PhD programme. We combine rigorous supervision and a full schedule of events, with a relaxed, friendly atmosphere in which students and staff learn from each other.

Your studies are complemented by:

- individual academic supervision
- departmental training sessions on a variety of topics
- access to a range of resources and provisions, including a dedicated resource room
- opportunities to present your work and network with other researchers through our seminar programme.

Moral philosophy

Our expertise spans metaethics, normative ethics, value theory and applied ethics.

Philosophy of mind

We have expertise on various aspects of philosophy of mind, including cognitive science, consciousness, perception, and the relation between language and mind.

Philosophy of language

We address many aspects of philosophy of language, including the relationship between language and mind, theories of meaning, Wittgenstein's philosophy of language, contextualism, and experimental philosophy of language.

Philosophy of science

Research includes Kuhn, Popper, Feyerabend, Mach, Hertz and nineteenth-century philosophy of science.

Wittgenstein

We investigate many aspects of Ludwig Wittgenstein's philosophy, both early and late.

Metaphysics

Our expertise covers contemporary analytic metaphysics, Aristotelian metaphysics, the metaphysics of Aquinas, and the relationship between metaphysics and science, as well as metaphysics and philosophy of religion.

Global philosophy

We have expertise in various aspects of Buddhist philosophy, metaphysics, and mind and ethics in Indian philosophies, and investigate these areas through cross-cultural philosophical dialogues between Buddhism and Platonism, among others.

GRADUATE EMPLOYMENT

We have an enviable graduate employment record: our PhD alumni have been appointed to academic posts at universities including Edinburgh, Oxford, Warwick, Stockholm, Sun Yat-Sen University, Chittagong, Rhodes, Iceland and Universidade Nova de Lisboa.

Other alumni have pursued careers in different areas such as law, management, finance, teaching and the civil service.

Find your supervisor

www.reading.ac.uk/phil-team

Find out more

www.reading.ac.uk/phil-phd

Find funding

See page 40



Our Department produces excellent and world-leading research across all three of its research clusters: comparative politics, international relations, and political theory.¹

Members of these clusters employ a wide range of research methods, including empirical techniques, normative analysis, and theoretical, historical and critical approaches.

LIVELY, ACTIVE COMMUNITY

Present work-in-progress at our fortnightly student-run PhD seminar and annual PhD conference, and attend weekly departmental seminars, at which visiting academics present world-leading research.

POLITICS AND INTERNATIONAL RELATIONS



RESEARCH TRAINING

Receive dedicated research training within your first year if you study full time, covering a variety of research methods and philosophical issues in the social sciences. The training meets Economic and Social Research Council (ESRC) requirements, and will help equip you to develop your project, select the most appropriate research methods, and become familiar with a variety of approaches across the discipline.

Comparative politics

Our research includes negotiation and lobbying in the EU, voting behaviour, and a particular focus on extremism and the far-right.

International relations

Members of this cluster research across a wide range of topics. The four organising main themes are:

- war, conflict, and strategy
- international relations theory
- international institutions and especially the UN
- international political economy.

The Ways of War Centre is led by members of this cluster.

Political theory

We focus on a range of historical and contemporary topics, including Hobbes, equality, and risk. Our Department has strong links with political theorists and philosophers in other departments across the University, institutionalised through the Reading Ethics and Political Philosophy (REAPP) group, co-convened with the Department of Philosophy.

Find your supervisor

www.reading.ac.uk/pir-team

Find out more

www.reading.ac.uk/pir-phd

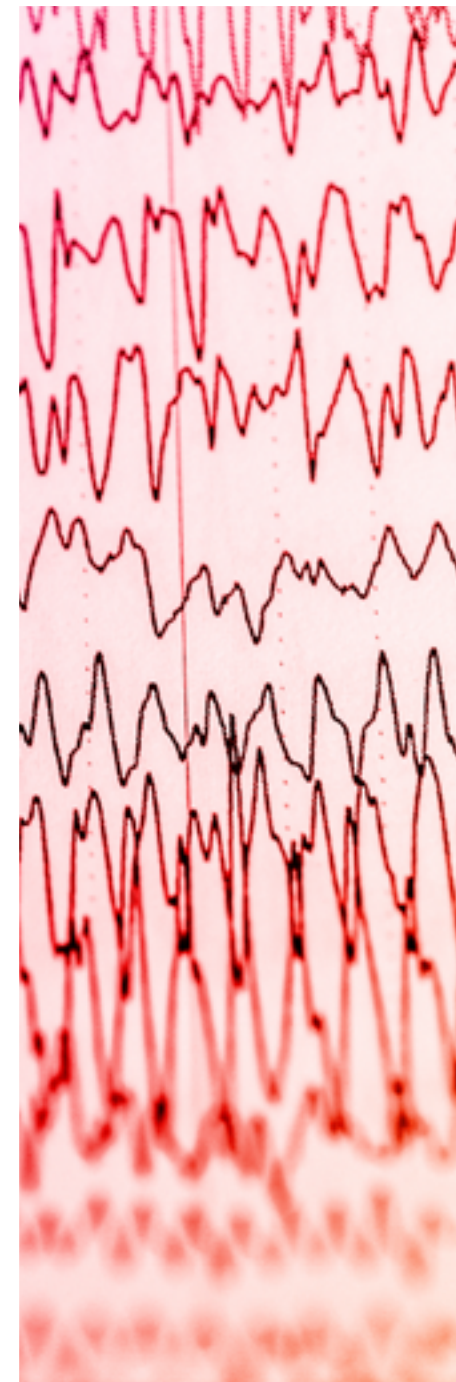
Find funding

See page 40

¹ REF 2014 – Politics and International Studies. 66% of research was ranked either world leading or internationally excellent.



PSYCHOLOGY AND CLINICAL LANGUAGE SCIENCES



Join a supportive research environment staffed by internationally recognised researchers.

98% of our research overall has been rated world leading, internationally excellent or internationally recognised.¹ Our research strengths include psychopathology and emotional disorders, affective neuroscience, personalised nutrition, motivation and behaviour change, perception and action, cognitive control, language and bilingualism, and speech and language therapy.

SPECIALIST FACILITIES

Benefit from superb research facilities, such as our Neuroscience Centre, housing a research-dedicated MRI scanner and MRI-compatible TMS, EEG/ERP and thermal stimulator for generating pain. Additionally, we have labs focusing on virtual reality, vision, sensory and psychophysiology labs, and infant observation rooms.

We also have NHS and independent clinics on campus, and actively participate in University-wide centres of interdisciplinary excellence.

Psychopathology and affective neuroscience

Research includes emotion perception; learning and (dys)regulation; and brain, bodily and genetic mechanisms of social cognition. We have particular expertise in the underlying causes and effective treatment of depression, anxiety, eating disorders and autism in children and adults, as well as neurodegeneration and wellbeing in older adults.

¹ REF 2014 – Psychology, Psychiatry and Neuroscience.

Language, development and ageing

Research includes psycholinguistics and neurolinguistics; fluency disorders; monolingual, bilingual and multilingual language acquisition processing; secondary effects of bi/multilingualism on domain-general cognition and neurological structure; and impaired language/literacy abilities and sensory perception in children with developmental disorders (such as autism, dyslexia, Down's Syndrome, specific language impairment, and Williams Syndrome), and in acquired disorders in adulthood (such as aphasia, and Alzheimer's/dementia).

Perception, cognition and nutrition

Research covers the interplay between dietary intake and psychological wellbeing in children and in healthy and impaired older adults; motivation; memory (working, prospective and autobiographical); social cognition; attention and reasoning. We also have expertise in neuroimaging, surveys and randomised control trials, which are studied using a range of methodologies.

Our strong perception group uses virtual reality, eye tracking and neuroscience methods to study the pathway from the sense organs to our conscious experience of the world and ability to act in it.

Find your supervisor

www.reading.ac.uk/psych-team

Find out more

www.reading.ac.uk/psych-phd

Find funding

See page 40



Real Estate and Planning at Henley Business School aims to offer a first-class environment, conducive to production of the highest-quality research.

Our research spans the economics, finance and management of real estate, as well as land use and planning.

Studying your PhD with us offers four key benefits:

- formal research training in both quantitative and qualitative methods
- flexibility to meet individual needs for both training and supervisory arrangements
- student–staff interaction leading to quality and a strong publication record
- timely completion of the degree and future placement in the job market.

STUDENTSHIPS

A number of full and partial scholarships are available for full-time PhD students.

Environment, sustainability and participation

We have a long-standing interest in sustainability and community involvement, and the environment in the context of urban and rural planning.

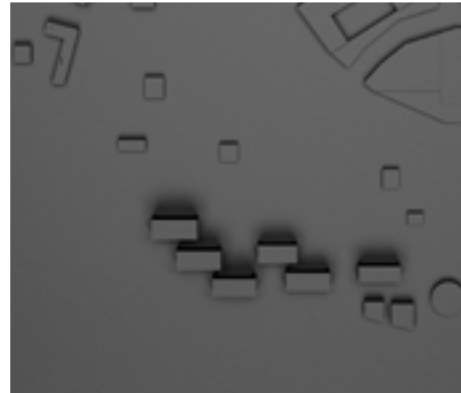
Real estate investment and finance

Alongside pricing in private real estate markets, we conduct research in corporate finance and asset pricing applied to real estate investment trusts (REITs), unlisted funds, mortgage-backed securities and other real estate-based financial products. We also cover investment, portfolio management (including performance measurement) and the impact of behaviour on pricing.

Valuation, leasing and market practice

We focus on the valuation of buildings, developments and land real options, and are one of the largest clusters of appraisal, finance and investment academics in Europe. We also research core policy and practice issues facing the real estate industry and its occupiers.

REAL ESTATE AND PLANNING



Housing economics and finance

We study issues related to the relationship and functionality of housing and mortgage markets, for example, housing affordability during a deep financial and economic crisis, and their role in a wider national and international economy.

Find your supervisor and discover more www.henley.ac.uk/phd

Find funding
See page 40



TYPOGRAPHY & GRAPHIC COMMUNICATION



Our Department is ranked 1st in the UK for research overall, covering the history, practice and theory of typography and graphic communication.¹

Join a diverse postgraduate community, renowned in the UK and internationally for the scope and quality of its research.

SUPERVISION AND SUPPORT

You'll benefit from experienced and committed supervisors, access to research training opportunities, and lectures by visiting speakers and contributors to our specialist summer schools and workshops.

COLLECTIONS AND ARCHIVES

Engage with the materiality of designed artefacts from our outstanding printing, lettering and graphic design collections, including the Otto and Marie Neurath Isotype Collection, the Non-Latin Typeface Collection, and the Centre for Ephemera Studies. We encourage projects that define new histories through analysis and interpretation.

OPPORTUNITIES AND PARTNERSHIPS

Raise your profile among academic audiences through publications, present at conferences or meetings, collaborate on projects with your supervisors, engage with private and public sector organisations, and reach new audiences through exhibitions and social media. We have research-based links with the NHS and healthcare trusts, charities and government agencies, publishers, libraries, museums, and galleries.

We supervise PhD projects in a variety of areas.

Typography and typeface design

- History and technology of printing, typefounding, letterforms and type
- History and design of non-Latin typefaces
- Influence of composing practices on typeforms
- Type design for cross-media use.

Information design

- Graphic explanation and information visualisation
- Design for communication and decision-making – including in health, nutrition, environment, legal and technical contexts
- Design for digital media and multichannel communications
- Graphic support for wayfinding and representations of spatial experience.

Communication design

- Design history and theory in many contexts
- Design, politics and culture
- Design education
- Book design and publishing, including in art practice contexts.

Find your supervisor
www.reading.ac.uk/typ-team

Find out more
www.reading.ac.uk/typ-phd

Find funding
See page 40

¹ Times Higher Education Institutions Ranked by Subject based on its analysis of REF 2014 – Art and Design: History, Practice and Theory.

APPLYING FOR A PHD

1. CHECK YOU HAVE THE RIGHT QUALIFICATIONS

ACADEMIC REQUIREMENTS

We normally accept an upper second-class UK honours degree (2:1) or equivalent, although some subjects require or prefer a master's degree. Please contact us at www.reading.ac.uk/question for any subject-specific requirements.

ENGLISH LANGUAGE REQUIREMENTS FOR INTERNATIONAL STUDENTS

The majority of our PhD programmes require a minimum IELTS score of either:

- 6.5 with no individual element scoring less than 5.5
- 7.0 with no individual element scoring less than 6.0.

Any English requirements relating to your PhD programme will be specified on your offer of admission. When you apply, please let us know your current level of English (through your most recent test score) and we can advise you on the best route to a programme.

If you have taken an alternative test or qualification, or are unable to take an IELTS test, please visit www.reading.ac.uk/ad-englishtests for information on the range of tests and qualifications that we accept as evidence of English language ability.

We welcome applicants who are able to demonstrate their English language proficiency at the point of application, or who may not be at quite the right level yet. See Pre-sessional English on page 39 and our website for more information.

2. SELECT YOUR RESEARCH TOPIC

There are typically two ways that you can select a research topic:

- respond to an advert for a specific project, hosted in a department
- choose a topic in your area of interest.

If choosing your own topic, the topic should address a perceived gap in the literature, and be:

- suitable for study at PhD level
- able to be carried out within the normal registration period with the resources that will be available to you
- of interest to you.

Ask us if your topic is appropriate for PhD study by contacting us at www.reading.ac.uk/question.

3. IDENTIFY A DEPARTMENT AND SUPERVISOR

Visit our website, where all of our academic schools and departments have pages listing the research interests of our staff.

You can contact a potential supervisor if you have someone specific in mind, but it's not essential to communicate directly with a school or department before applying.

4. WRITE YOUR RESEARCH PROPOSAL

If you have selected your own research topic, you will need to write an outline of your research proposal and submit this with your application. A proposal is not required if you're applying for a project that has been devised by a supervisor.

We strongly encourage you to read our guidance on how to write a research proposal before submitting your application: www.reading.ac.uk/graduateschool/how-to-apply.

You can also see a list of currently available research projects at www.reading.ac.uk/gs/find-your-phd-project.

HOW DO I WRITE A RESEARCH PROPOSAL?

A research proposal should generally include:

- the main research question(s) you want to address
- what makes the research of interest and importance
- how your thinking builds on any previous work
- what research methodology or techniques you may need to use
- what facilities you are likely to require
- how the research can be completed in the time available.

5. THINK ABOUT YOUR START DATE

Most PhD students join us at the beginning of the autumn term in September, but a number of researchers start at other times of the year.

Your start date may depend on supervisor availability or other factors, and can be negotiable. For more information, contact us at www.reading.ac.uk/question.

Some scholarships (including those funded by the University of Reading, the research councils and other organisations) have application deadlines and many require you to have received a formal offer of a place from us before you submit your funding application.

6. CHECK FOR ANY DEADLINES

In most cases, there are no specific application deadlines.

However, you should leave plenty of time for us to process your application and for you to source funding or arrange a student visa, if required. We recommend the following timescales:

- **UK applicants** should allow two months before the intended start date
- **International applicants** should allow four months before the intended start date.

7. APPLY ONLINE

Use our online application service at www.reading.ac.uk/graduateschool/how-to-apply. You can include electronic copies of your academic transcripts, certificates and other supporting information, such as your research proposal.

If you are unable to apply online, you can request a paper application form by calling **+44 (0) 118 378 5289** or writing to **Admissions Office, University of Reading, Miller Building, Whiteknights, Reading, RG6 6AB, UK**.

Our team of experienced admissions staff is here to help you throughout the application process. Visit www.reading.ac.uk/question.

8. ARRANGE FUNDING

PhD fees vary according to whether you:

- come from the UK, EU or overseas
- want to study full time or part time
- will be based in Reading for the entire programme.

For more information, visit www.reading.ac.uk/gs/fees.

AFTER YOU APPLY

You'll receive email acknowledgement and details about how to access your personalised Me@Reading applicant portal. The portal allows you to track the progress of your application, access information about your chosen area of study, and find other useful information about the University of Reading.

We aim to reach a decision on your application within four weeks. The length of time taken to reach a decision will vary as each application is considered on an individual basis according to your relevant strengths and merits. Once your application has been considered, you'll receive an email from the Admissions Office informing you of the decision.

If your application has been successful, our email will explain the offer and any conditions attached to it, and also give further details of the fees and other expenses associated with your programme.

VISIT US

We offer a range of ways for you to meet us.



CAMPUS TOURS¹

Find out when we are planning to run our tours at www.reading.ac.uk/campus-tours.

You can also experience our campuses from the comfort of your own home via our virtual tour at www.reading.ac.uk/virtualtour. Explore academic buildings, student services, museums and sports facilities, in addition to our many beautiful green spaces.

A self-guided tour is available at www.reading.ac.uk/self-guided-tours.

MEET US IN YOUR COUNTRY¹

If you're an international student, there are also opportunities to meet us in your own country or region, including at virtual fairs. Check the calendar at www.reading.ac.uk/meet-us-in-your-country for a list of events.

For more information, get in touch with the Global Recruitment Team (details on page 84) or visit www.reading.ac.uk/international.

¹ We continue to monitor and follow UK government guidance around the coronavirus (COVID-19) pandemic. In-person guided and self-guided campus tours, general visits to our campuses, and other events typically held on campus will be subject to this advice, as will our attendance at events across the UK and worldwide. See www.reading.ac.uk/meet-us for a range of opportunities to engage with us.

LOCAL AREA

Reading is well connected by rail and road, and our two main campuses are close to the town centre.

We aim to be a leading university in environmental sustainability. We've been ranked as a first-class university for environmental and ethical performance in the 2019 People & Planet University League. Where possible, we encourage staff, students and visitors to travel to our campuses using sustainable modes of transport. We want to minimise our environmental impact, including traffic congestion and parking in the local area.

TRAVEL BY TRAIN

Reading train station is easily accessible from most other places in the UK. London Paddington is 22 minutes away by train, and direct rail links exist for many other major cities, including Birmingham, Manchester, Glasgow, Cardiff, Bristol and Exeter.

TRAVEL BY CAR

Our Whiteknights (RG6 6UR) and London Road (RG1 5AQ) campuses are just a few miles from the M4 motorway.

CONNECT WITH US

-  facebook.com/theuniversityofreading
-  [@UniofReading](https://twitter.com/UniofReading)
-  [@UniofReading](https://www.instagram.com/UniofReading)
-  www.reading.ac.uk/chat

TRAVEL BY BUS

Getting to our campuses from the centre of town is easy. The following buses leave from Reading train station at regular intervals, 24 hours a day. Please note: the 21a only runs during term time.

To Whiteknights main entrance:
21 and 21a

To Whiteknights Earley Gate entrance:
17, 19a, 19b and 19c.

To London Road campus: 21 and 21a.

TRAVEL BY PLANE

Direct train and coach services run between Reading and London's international airports at Heathrow and Gatwick. Coaches to Heathrow take around 45 minutes and you can reach Gatwick in less than two hours.



STUDENT PARKING

Campus parking spaces are extremely limited, and therefore spaces are only allocated to students with particular needs. For more information, please visit www.reading.ac.uk/student-parking.

Our facilities are within easy walking distance and we are well served by public transport. We run lots of initiatives to help you with your travel – from free bike checks and bike security marking, to a car club scheme on campus.

USEFUL INFORMATION

If you have any questions about studying at the University of Reading, the best way to get in touch is at www.reading.ac.uk/question.

CONTACT NUMBERS

Accommodation Team

For information about our University accommodation
+44 (0) 118 378 4203

Admissions Office

For advice about entry requirements
and the application/admissions process
+44 (0) 118 378 5289

Careers Centre

For information about student work and experience opportunities
+44 (0) 118 378 8359

Disability Advisory Service

For advice about support for students with additional needs
+44 (0) 118 378 4202

Graduate School

For advice on life as a doctoral research student at Reading
+ 44 (0) 118 378 5063

Student Advisory Team

For advice on immigration
+44 (0) 118 378 8038

Student Financial Support Team

For advice on funding, including scholarships and bursaries
+44 (0) 118 378 5555

Reading University Students' Union

For information about students' union events, activities, clubs and societies, and welfare support
+44 (0) 118 378 4100

Global Recruitment Team

For general enquiries from UK students
UK Recruitment and Outreach
+44 (0) 118 378 3880

For general enquiries from students outside the UK
International
+44 (0) 118 378 3838

UNIVERSITY TERM DATES 2021/22

Autumn term: Monday 27 September
(Monday 20 September for new students) – Friday 10 December 2021
Spring term: Monday 10 January – Friday 25 March 2022
Summer term: Tuesday 19 April – Friday 10 June 2022

INDEX

Accounting see Business Informatics,
Systems and Accounting [52](#)

Agriculture, Policy and Development [45](#)
• PhD Agricultural, Environmental and Food Economics
• PhD Animal, Dairy and Food Chain Sciences
• PhD Consumer Behaviour and Food Marketing
• PhD Crop Sciences
• PhD Ecology and Agri-Environmental Research
• PhD International and Rural Development

Ancient History see Classics [54](#)

Archaeology [46](#)
• PhD Archaeology

Architecture see Built Environment [51](#)

Art [47](#)
• PhD Fine Art

Biological Sciences [48](#)
• PhD Biological Sciences

Biomedical Engineering [49](#)
• PhD Biomedical Engineering

Biomedical Sciences [50](#)
• PhD Biomedical Sciences

Built Environment [51](#)
• PhD Construction Management
• PhD Energy and Environmental Engineering
• PhD Architecture

Business Informatics, Systems and Accounting
see also Management [52/69](#)
• PhD Accounting and Financial Management
• PhD Informatics and Systems Science

Chemistry [53](#)
• PhD Chemistry

Classics [54](#)
• PhD Classics

Climate see Meteorology [72](#)

Computer Science [55](#)
• PhD Computer Science

Construction Management see Built Environment [51](#)
Consumer Behaviour and Food Marketing
see Agriculture, Policy and Development [45](#)

Cybernetics [56](#)
• PhD Cybernetics

Early Modern Studies [57](#)

Ecology see Biological Sciences [48](#)

Economics [58](#)
• PhD Economics

Education [59](#)
• PhD Education
• EdD Doctor of Education

Electronic Engineering [60](#)
• PhD Electronic Engineering

Energy and Environmental Engineering
see Built Environment [51](#)

English Language and Applied Linguistics [61](#)
• PhD Applied Linguistics
• PhD Applied Linguistics (Taught-Track and Thesis)

English Literature [62](#)
• PhD English Literature

Environmental Science
see Geography and Environmental Science [66](#)

Film, Theatre & Television [63](#)
• PhD Film, Theatre & Television

Finance [64](#)
• PhD Finance

Food and Nutritional Sciences [65](#)
• PhD Food and Nutritional Sciences
• PhD Food, Nutrition and Health
• PhD Gut Immunity

French Studies see Modern Languages [73](#)

Geography and Environmental Science [66](#)
• PhD Geography
• PhD Human Geography
• PhD Environmental Science
• PhD Soil Science

German Studies see Modern Languages [73](#)

Graphic Communication
see Typography & Graphic Communication [79](#)

History [67](#)
• PhD History

International Development
see Agriculture, Policy and Development [45](#)

International Relations
see Politics and International Relations [76](#)

Italian Studies see Modern Languages [73](#)

Language Sciences see Psychology and
Clinical Language Sciences [77](#)

Latin American Studies see Modern Languages [73](#)
Law [68](#)
• PhD Law

Management [69](#)
• PhD International Business and Strategy
• PhD Leadership, Organisations and Behaviour
• PhD Marketing and Reputation

Marketing see Agriculture, Policy and Development,
and Management [45/69](#)

Mathematics and Statistics [70](#)
• PhD Applied Statistics
• PhD Mathematics

Medieval Studies [71](#)
• PhD Medieval Studies

Meteorology [72](#)
• PhD Atmosphere, Ocean and Climate
• PhD Space Weather and Solar-Terrestrial Physics

Microbiology see Biological Sciences [48](#)

Modern Languages [73](#)
• PhD French Studies
• PhD German Studies
• PhD Italian Studies
• PhD Latin American Studies
• PhD Spanish Studies

Neuroscience see Psychology and Clinical Language
Sciences [77](#)

Nutrition see Food and Nutritional Sciences [65](#)

Pharmacy [74](#)
• PhD Pharmacy
• PhD Pharmacy Practice
• PhD Pharmaceutics
• PhD Pharmaceutical Chemistry
• PhD Physiology and Pharmacology

Philosophy [75](#)
• PhD Philosophy

Politics and International Relations [76](#)
• PhD Politics

Psychology and Clinical Language Sciences [77](#)
• PhD Psychology
• PhD Psycholinguistics
• PhD Clinical Language Sciences
• PhD Neuroscience

Real Estate and Planning [78](#)
• PhD Real Estate and Planning

Spanish Studies see Modern Languages [73](#)

Speech and Language Therapy see Psychology
and Clinical Language Sciences [77](#)

Teaching see Education [59](#)

Television see Film, Theatre & Television [63](#)

Theatre see Film, Theatre & Television [63](#)

Typography & Graphic Communication [79](#)
• PhD Typography

IMPORTANT INFORMATION

This guide was printed in July 2020 and is aimed at prospective doctoral students wishing to apply for a place at the University of Reading (the University) and start a programme in the 2021/22 academic year.

The guide describes in outline the programmes and services offered by the University. The University makes every effort to ensure that the information provided in this guide is accurate and up-to-date at the time of going to press (July 2020). However, it may be necessary for the University to make some changes to the information presented in the guide following publication. These reasons may include, by way of example, operational and/or academic reasons, which reflect changes in practice or theory in an academic subject as a result of emerging research, if an accrediting body requires certain changes, or if the UK Government introduces legislation and/or public health measures that require us to make changes to any of the published information. We have set out in this guide information regarding academic research programmes offered at the date of publication, but it is not intended to be construed and/or relied upon as a definitive list of research opportunities that will be available in any given year. These may change due to developments at the University, the research interests of staff, or the relocation of staff.

Prospective students are therefore advised that, prior to applying to study at the University, they should review and familiarise themselves with the most up-to-date information by visiting www.reading.ac.uk/ready-to-study, or by contacting us at www.reading.ac.uk/question.

The current version of the terms and conditions that will apply if you accept an offer at the University can be found at www.reading.ac.uk/coming-to-reading. The terms and conditions set out when, for example, we might make changes to your programme, or to the student regulations with which all students are required to comply. You are advised to read these before making an application. The current version of our Student Protection Plan can be found at www.reading.ac.uk/support.

Brexit

At the time of going to print, there is still uncertainty around many details relating to Brexit and how it may affect universities. We are closely monitoring the situation and encourage you to refer to www.reading.ac.uk/brexit for up-to-date information.

Copyright and trademarks

© University of Reading, 2020.

The University of Reading name and logo are registered trademarks. All rights reserved.

Credits

Produced by Carolyn Bull and colleagues across Global Recruitment and Admissions, and Marketing, Communication and Engagement.

Designed by Carl Frederik Wigernes (CPS).

Printed by Sterling Press Limited.

Photography by University of Reading Special Collections, Owen Williams (CPS), GWR, Thames Lido, Reading Arts, Sulay Kelly, Reading Fringe, Sitelines, Jelly open for Art, Salvo Toscano, Jon Mo, Craft Theory, Reading Film Theatre, Cecilia Schubert (CCAFS), UPP.

Art installation, *Snow Crash* (IMT Gallery, 2019), by recent graduate Kirsten Cooke is featured on page 47.

We are grateful to the many people involved in the production of this prospectus and would particularly like to thank the students and staff profiled.



DOCTORAL GUIDE 2021

CONNECT WITH US

 /graduateschoolReading

 @UniRdg_PhD

 @UniofReading

Find out more
www.reading.ac.uk/graduateschool

Any questions?
www.reading.ac.uk/question

100% recycled

When you have finished with
this document please recycle it